

10th Czech-Polish Workshop

ON RECENT GEODYNAMICS OF THE SUDETEN AND ADJACENT AREAS

Szklarska Poręba, Poland November 5 - 7, 2009

# Pořící-Hronov Fault Zone: Svatoňovice locality

**Jurand Wojewoda**

Wrocław University,

Department of Structural Geology  
and Geological Mapping

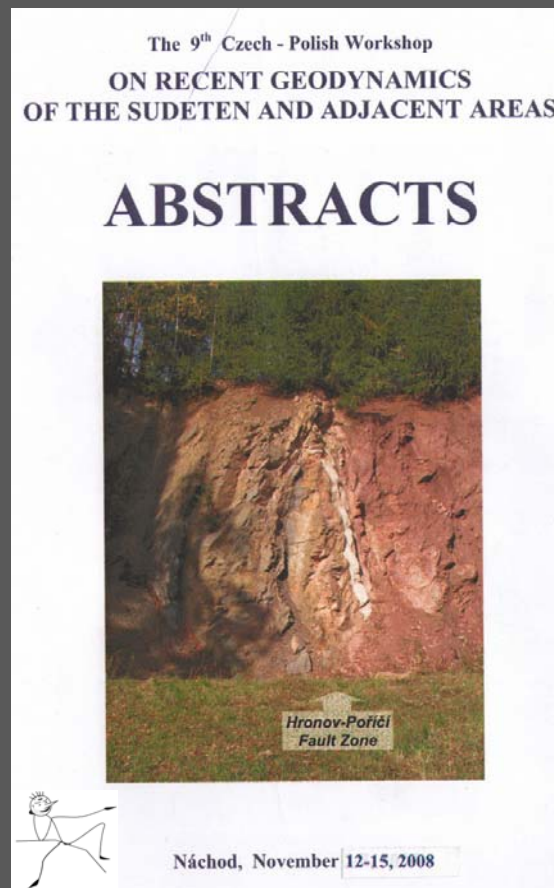
[jurand.wojewoda@ing.uni.wroc.pl](mailto:jurand.wojewoda@ing.uni.wroc.pl)

10th Czech-Polish Workshop

ON RECENT GEODYNAMICS OF THE SUDETEN AND ADJACENT AREAS

Szklarska Poręba, Poland November 5 - 7, 2009

# Pořící-Hronov Fault Zone: Svatoňovice locality



**Jurand Wojewoda**

Wrocław University,

Department of Structural Geology

and Geological Mapping

[jurand.wojewoda@ing.uni.wroc.pl](mailto:jurand.wojewoda@ing.uni.wroc.pl)

10th Czech-Polish Workshop

ON RECENT GEODYNAMICS OF THE SUDETEN AND ADJACENT AREAS

Szklarska Poręba, Poland November 5 - 7, 2009

# Pořící-Hronov Fault Zone: Svatoňovice locality



**Jurand Wojewoda**

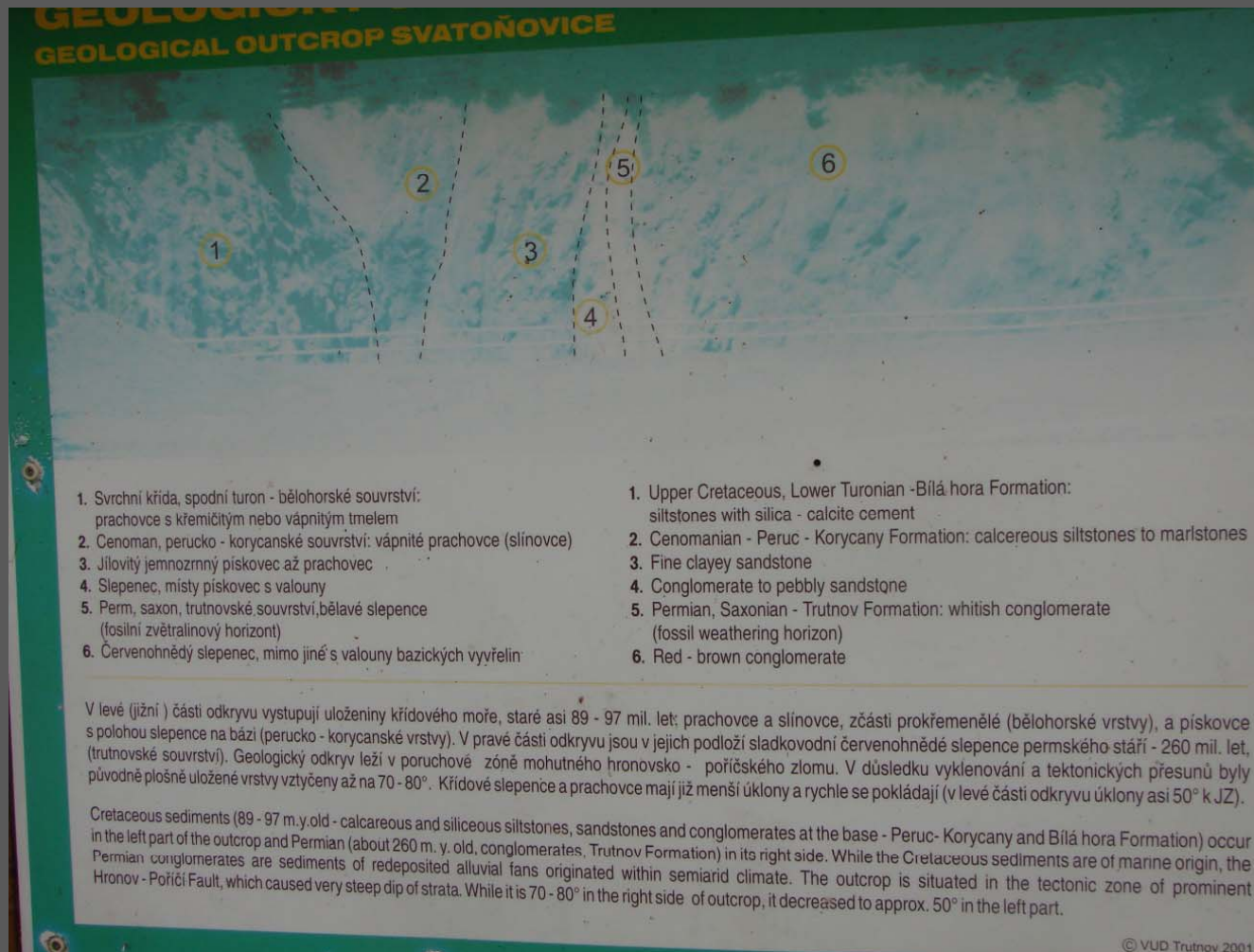
Wrocław University,  
Department of Structural Geology  
and Geological Mapping  
[jurand.wojewoda@ing.uni.wroc.pl](mailto:jurand.wojewoda@ing.uni.wroc.pl)

10th Czech-Polish Workshop

ON RECENT GEODYNAMICS OF THE SUDETEN AND ADJACENT AREAS

Szklarska Poręba, Poland November 5 - 7, 2009

# Poříčí-Hronov Fault Zone: Svatoňovice locality



**Jurand Wojewoda**

Wrocław University,

Department of Structural Geology  
and Geological Mapping

jurand.wojewoda@ing.uni.wroc.pl

# Poříčí-Hronov Fault Zone: Svatoňovice locality



# Poříčí-Hronov Fault Zone: Svatoňovice locality

W | E



S | N



10th Czech-Polish Workshop

ON RECENT GEODYNAMICS OF THE SUDETEN AND ADJACENT AREAS

Szklarska Poręba, Poland November 5 - 7, 2009

# Pořící-Hronov Fault Zone: Svatoňovice locality



**Jurand Wojewoda**

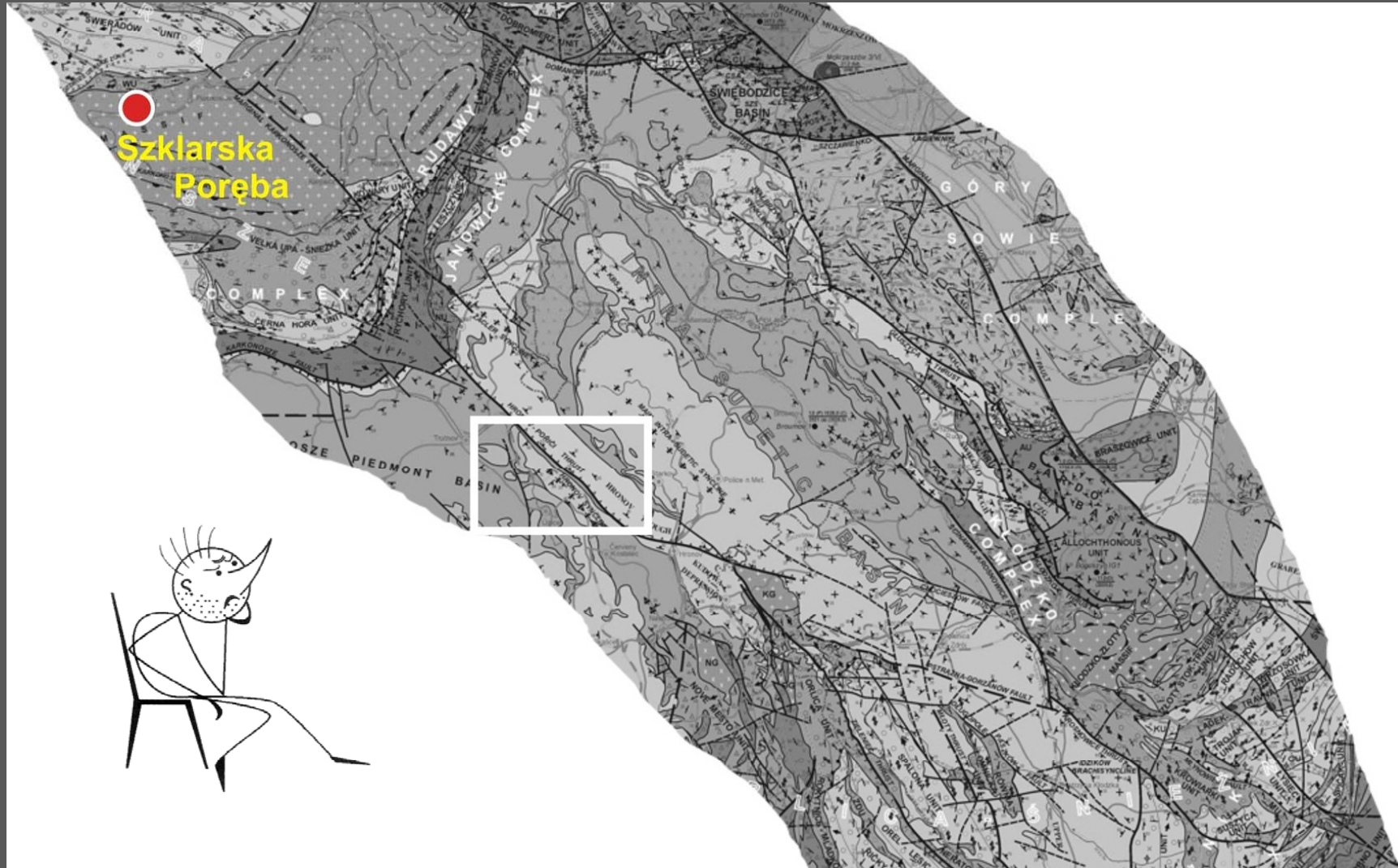
Wrocław University,

Department of Structural Geology  
and Geological Mapping

[jurand.wojewoda@ing.uni.wroc.pl](mailto:jurand.wojewoda@ing.uni.wroc.pl)

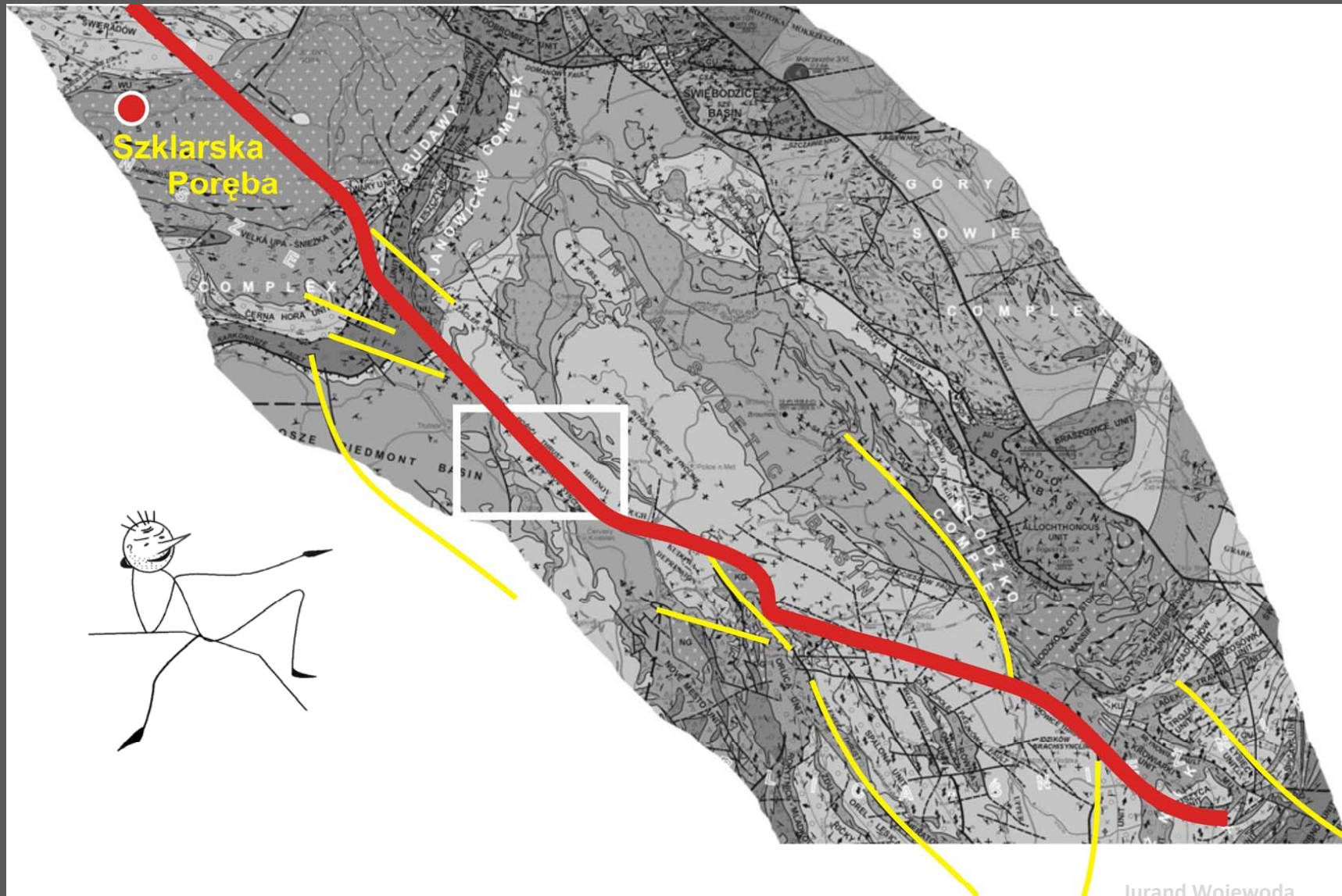
10th Czech-Polish Workshop  
ON RECENT GEODYNAMICS OF THE SUDETEN AND ADJACENT AREAS  
Szklarska Poręba, Poland November 5 - 7, 2009

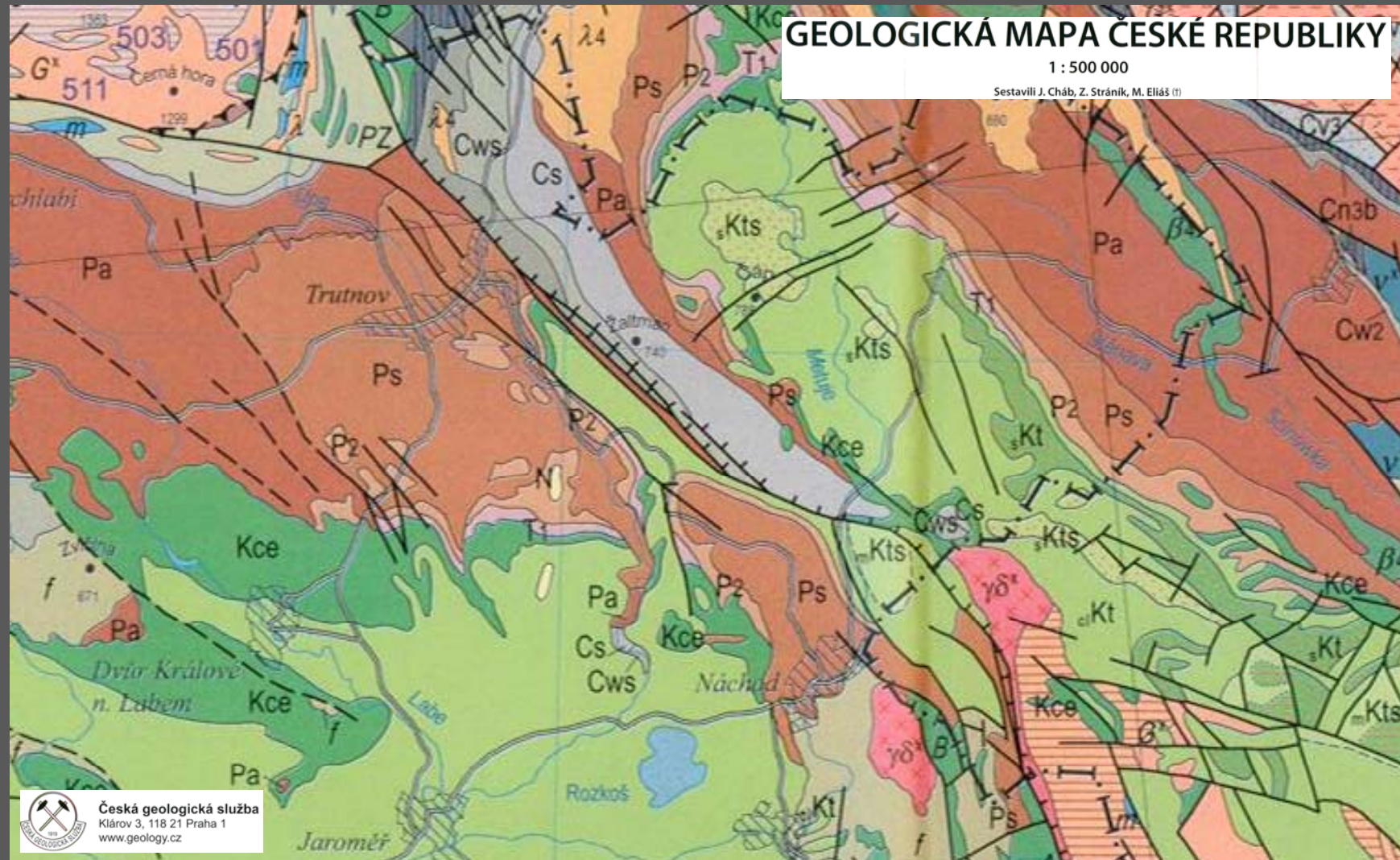
## Pořící-Hronov Fault Zone: Svatoňovice locality



Jurand Wojewoda  
Wrocław University,  
Department of Structural Geology  
and Geological Mapping  
jurand.wojewoda@ing.uni.wroc.pl



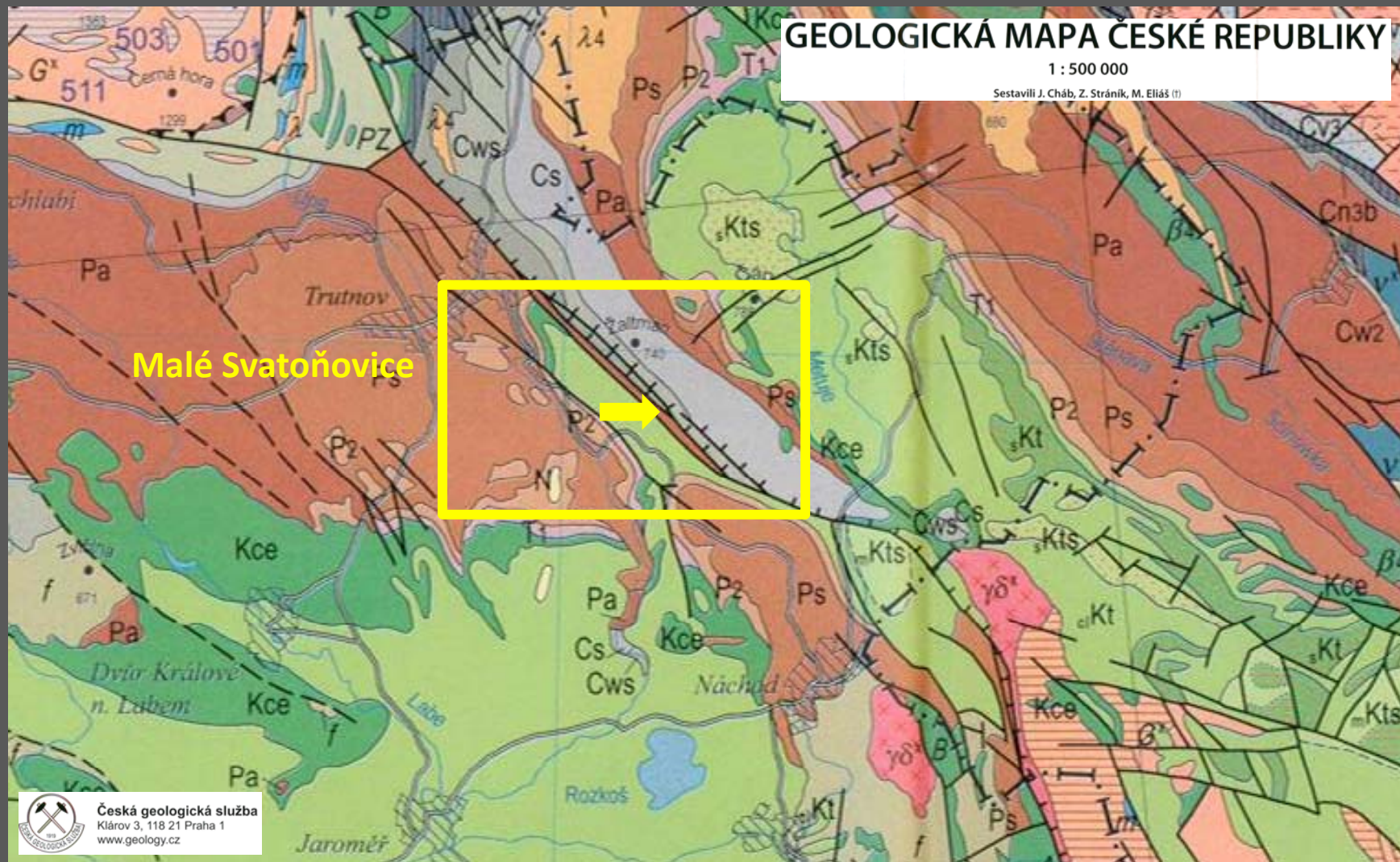




**Na sestavení Geologické mapy České republiky spolupracovali**

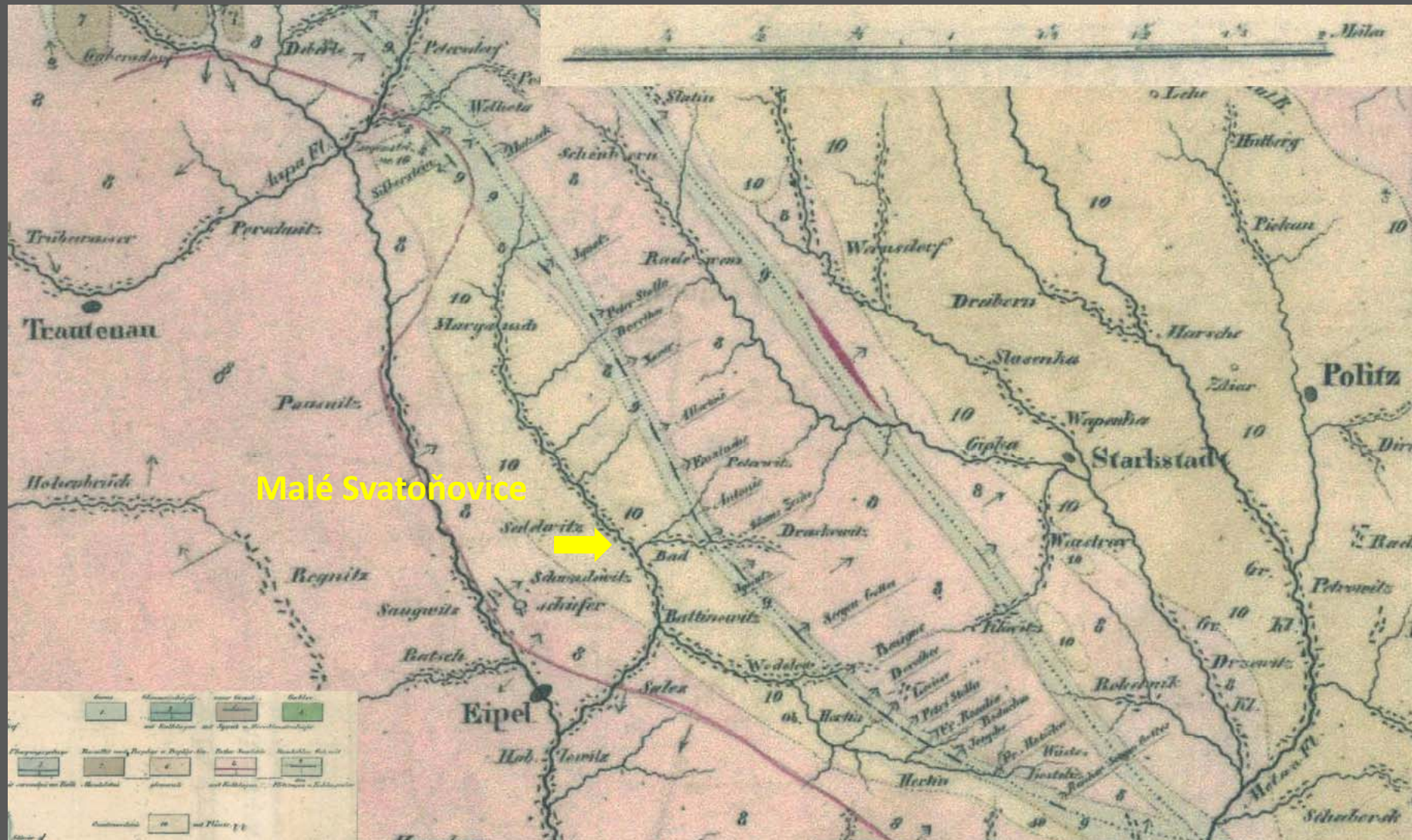
J. Adamovič, J. Aichler, J. Babůrek, K. Breiter, V. Cajz, K. Domečka, M. Fišera, P. Hanžl, V. Holub, P. Hradecký, I. Chlupáč (†), J. Klomínský, Z. Krejčí, J. Lexa, J. Mašek, B. Mičoch, M. Opletal, J. Otava, P. Pálenský, M. Potfaj, V. Prouza, R. Roetzel, M. Růžička, P. Schovánek, J. Slabý, J. Valečka, V. Žáček

Jurand Wojewoda  
Wrocław University,  
Department of Structural Geology  
and Geological Mapping  
jurand.wojewoda@ing.uni.wroc.pl



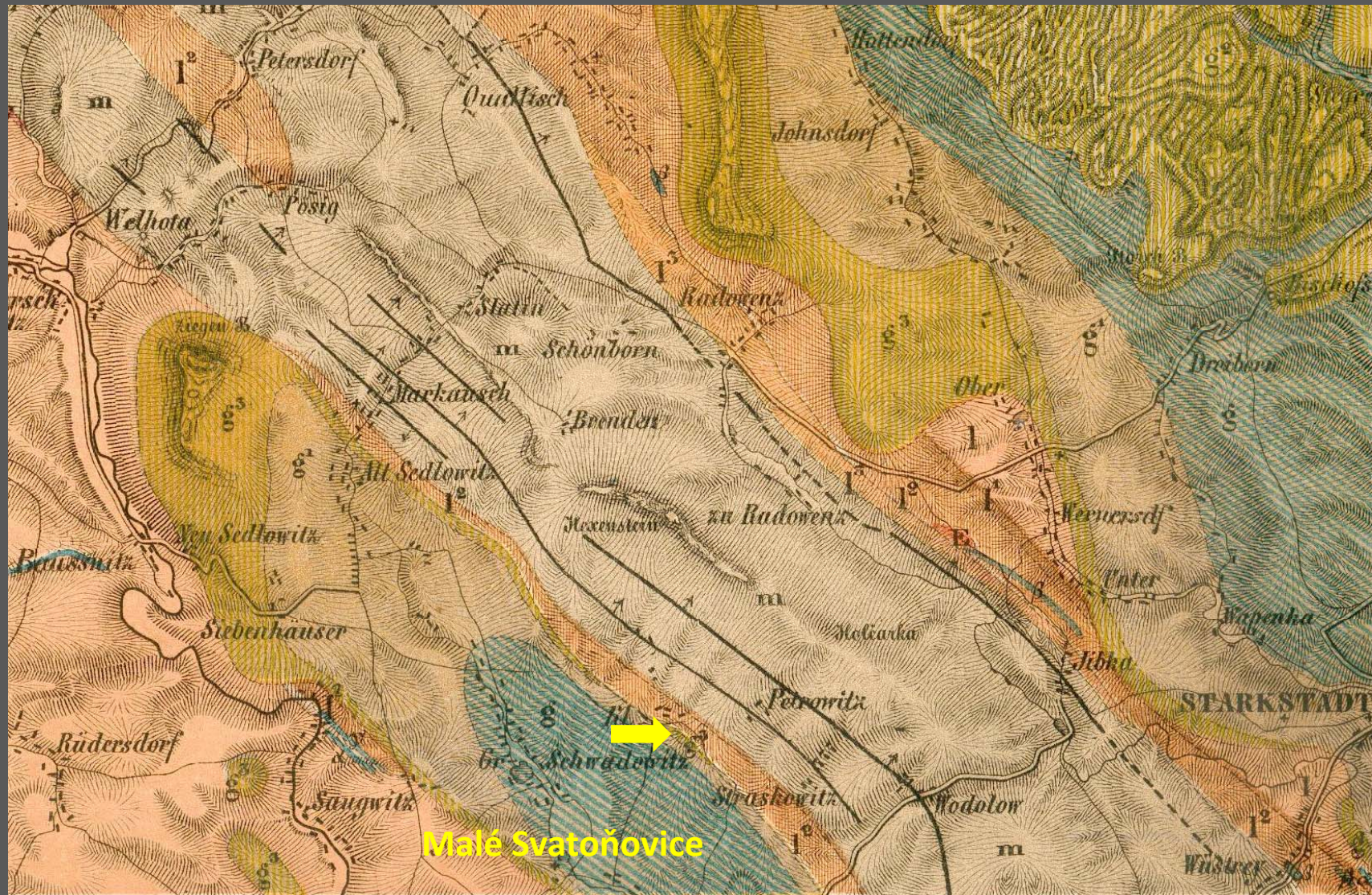
Na sestavení Geologické mapy České republiky spolupracovali  
J. Adamovič, J. Aichler, J. Babůrek, K. Breiter, V. Cajz, K. Domečka, M. Fišera, P. Hanžl,  
V. Holub, P. Hradecký, I. Chlupáč (†), J. Klomínský, Z. Krejčí, J. Lexa, J. Mašek, B. Mičoch,  
M. Opletal, J. Otava, P. Pálenský, M. Potfaj, V. Prouza, R. Roetznel, M. Růžička, P. Schovánek,  
J. Slabý, J. Valečka, V. Žáček

Jurand Wojewoda  
Wrocław University,  
Department of Structural Geology  
and Geological Mapping  
jurand.wojewoda@ing.uni.wroc.pl



Malé Svatoňovice

1831 (Zobel)



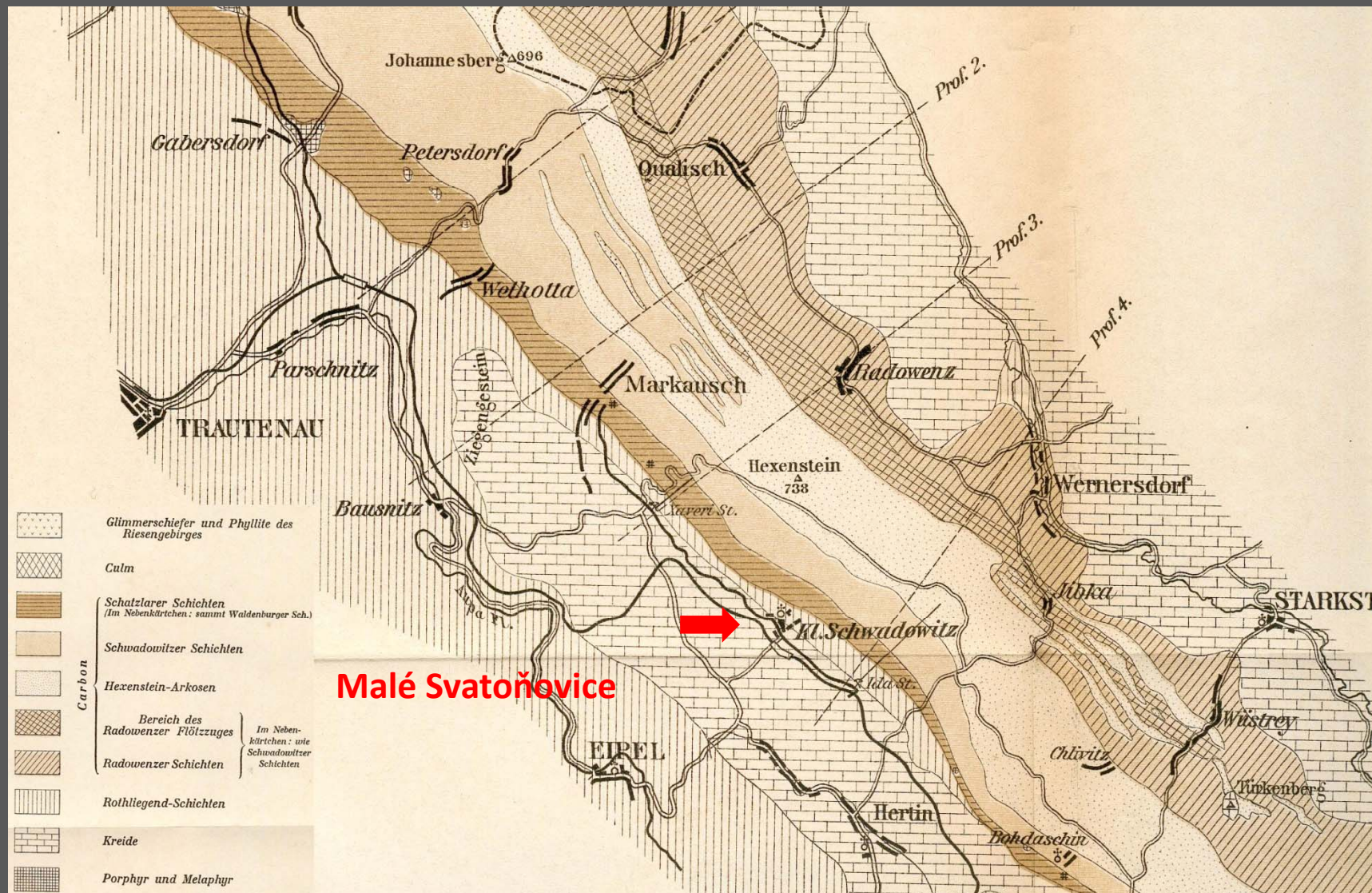
1867 (Beyrich et al.)

Jurand Wojewoda  
Wrocław University,  
Department of Structural Geology  
and Geological Mapping  
jurand.wojewoda@ing.uni.wroc.pl



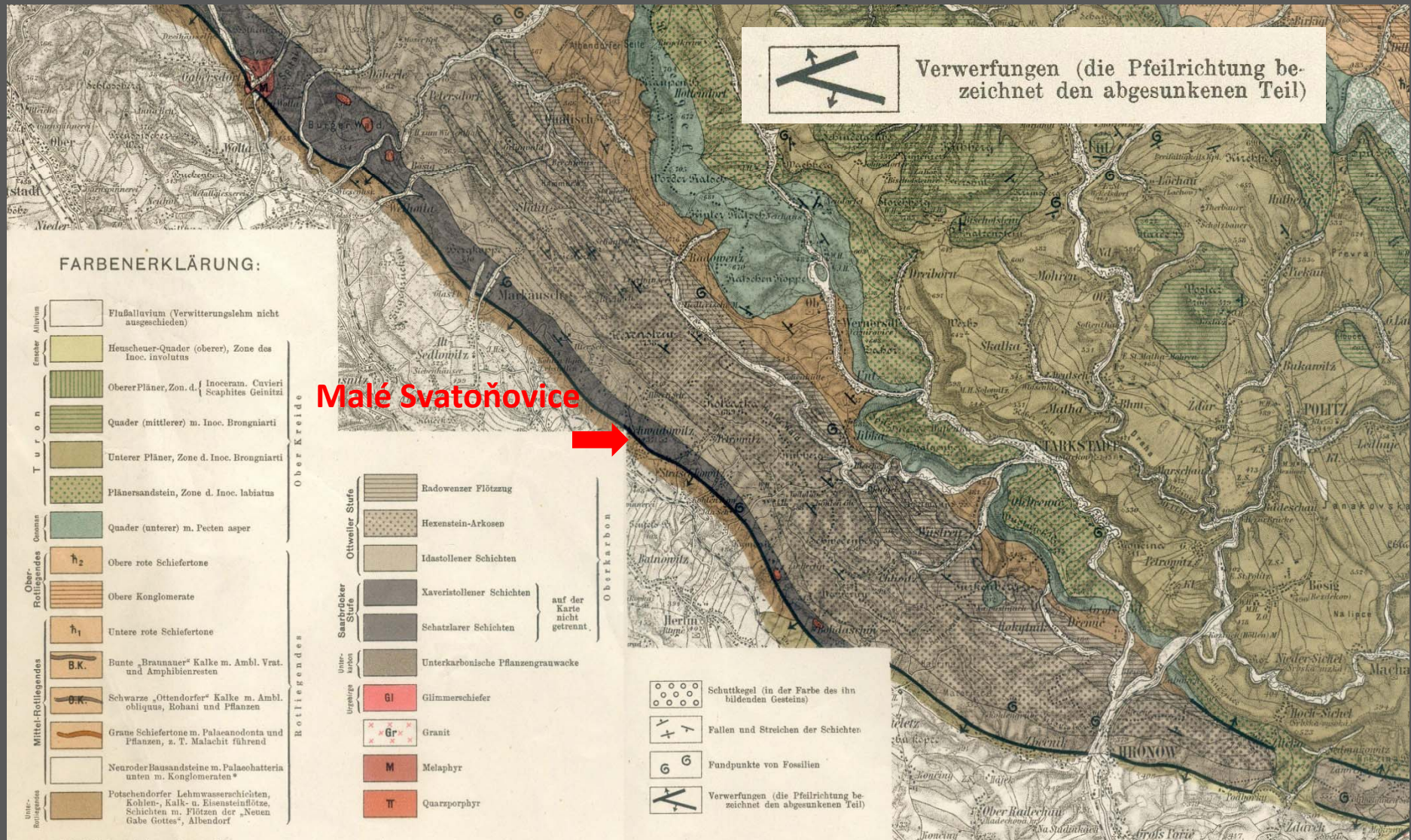
1871 (Jokely)

Jurand Wojewoda  
Wrocław University,  
Department of Structural Geology  
and Geological Mapping  
jurand.wojewoda@ing.uni.wroc.pl



Weithofer, K.A., 1897 (1898): Der Schatzlar-Schwadowitzer Muldenflügel des niederschlesisch-böhmischen Steinkohlenbeckens. Jb. Geol. Reichenanst., J. 47, 455-478.

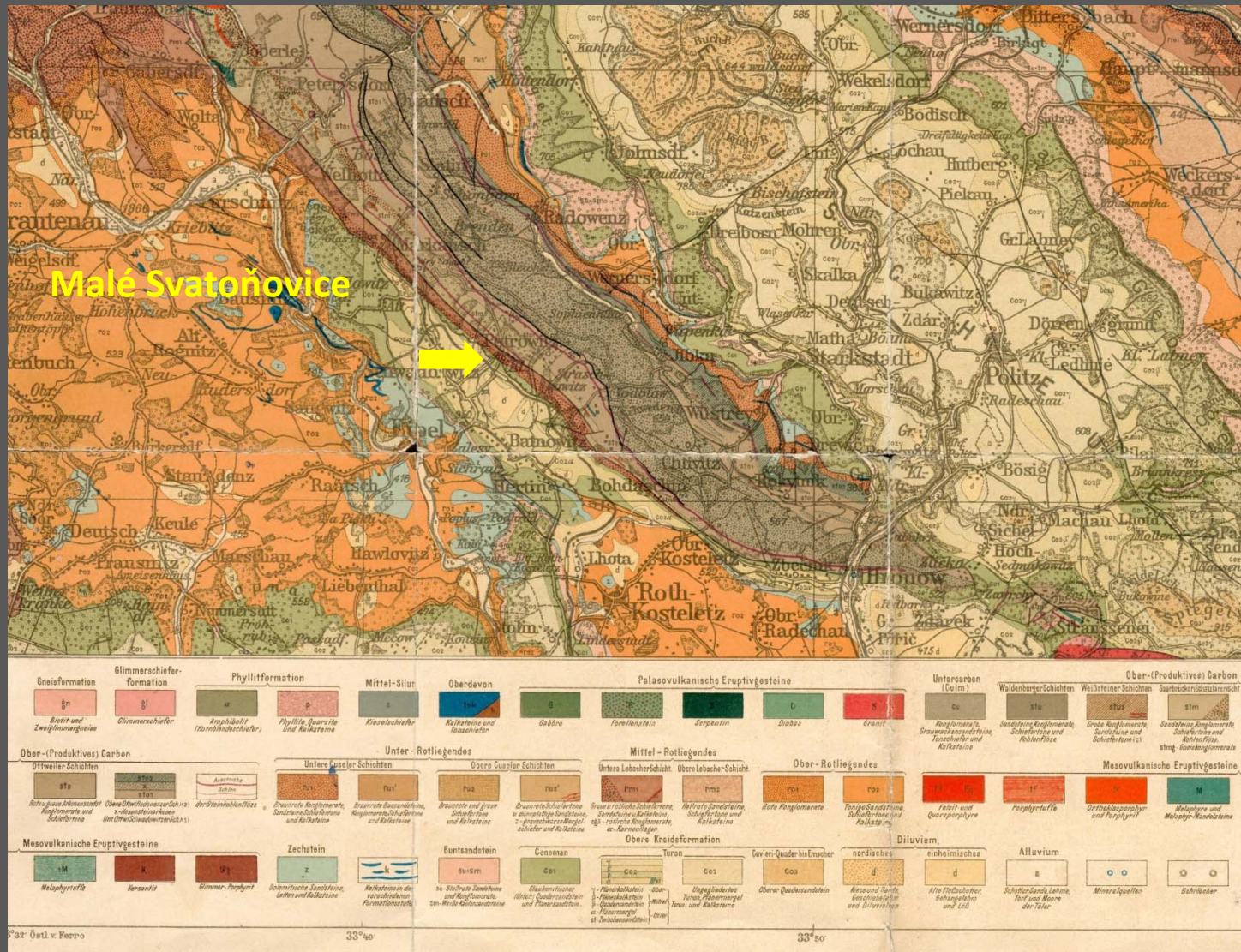
Jurand Wojewoda  
 Wrocław University,  
 Department of Structural Geology  
 and Geological Mapping  
 jurand.wojewoda@ing.uni.wroc.pl



1904 (Flegel et al.)

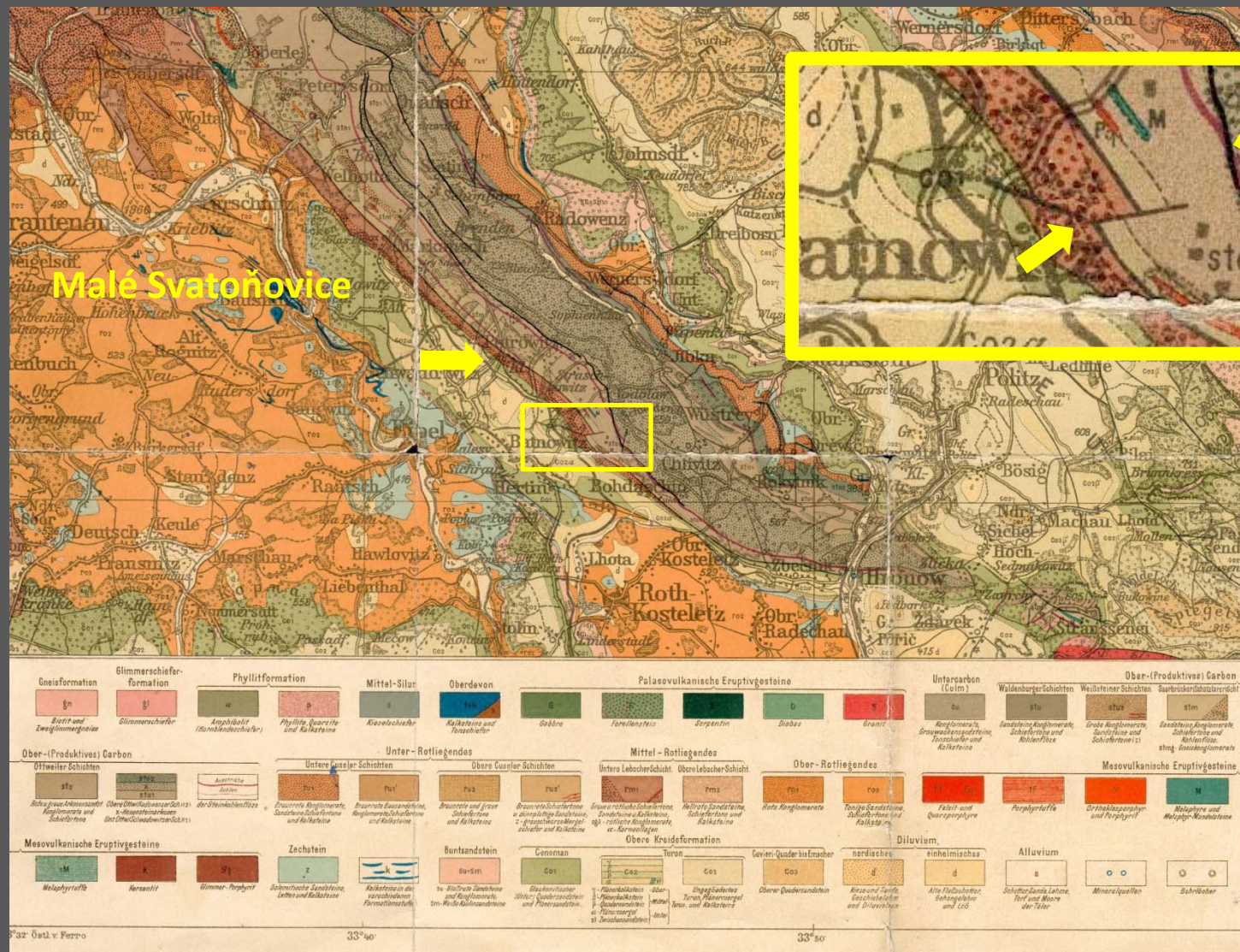
Jurand Wojewoda  
 Wrocław University,  
 Department of Structural Geology  
 and Geological Mapping  
 jurand.wojewoda@ing.uni.wroc.pl





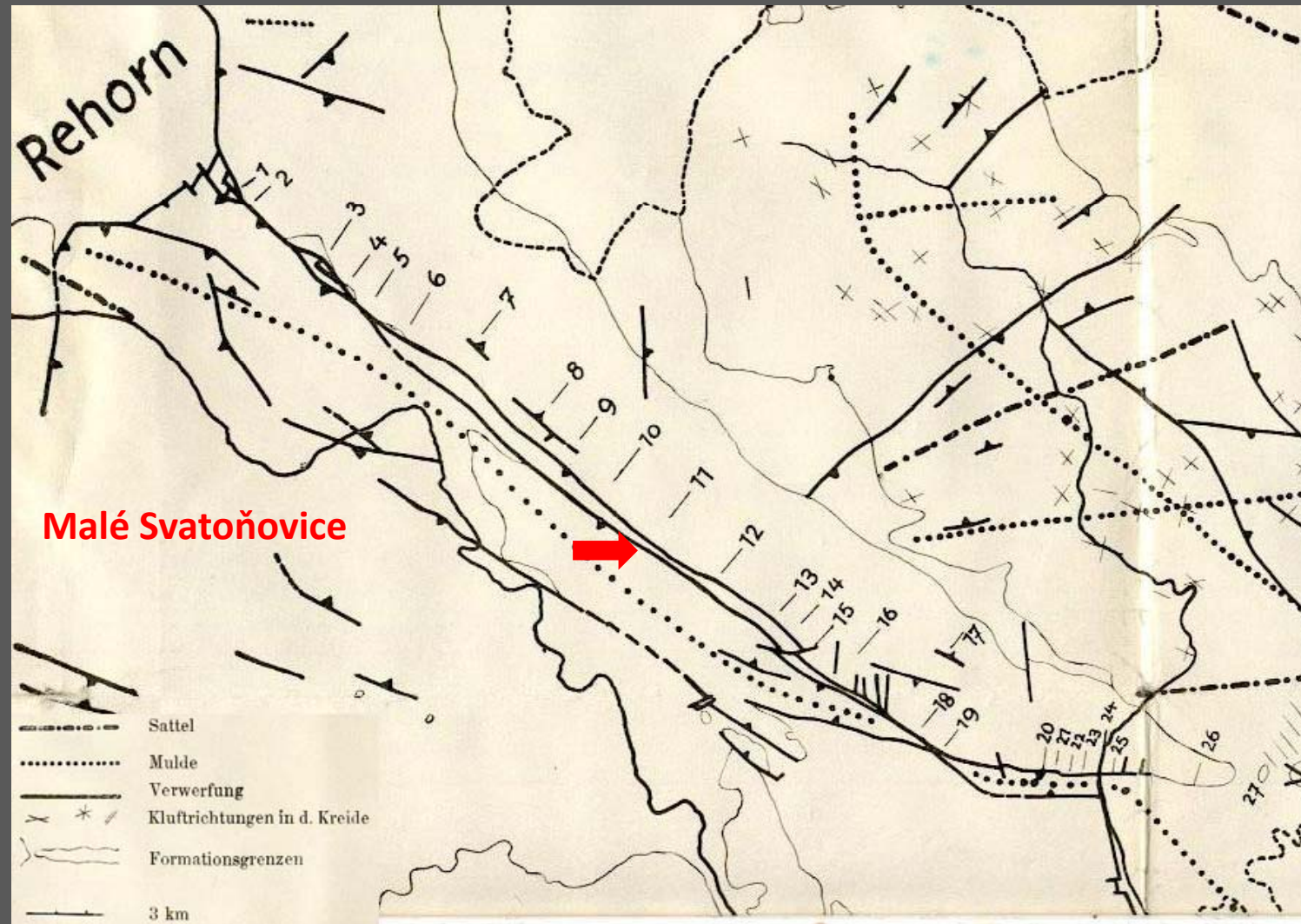
1913 (Dathe & Petrascheck)

Jurand Wojewoda  
 Wrocław University,  
 Department of Structural Geology  
 and Geological Mapping  
 jurand.wojewoda@ing.uni.wroc.pl



1913 (Dathe & Petrascheck)

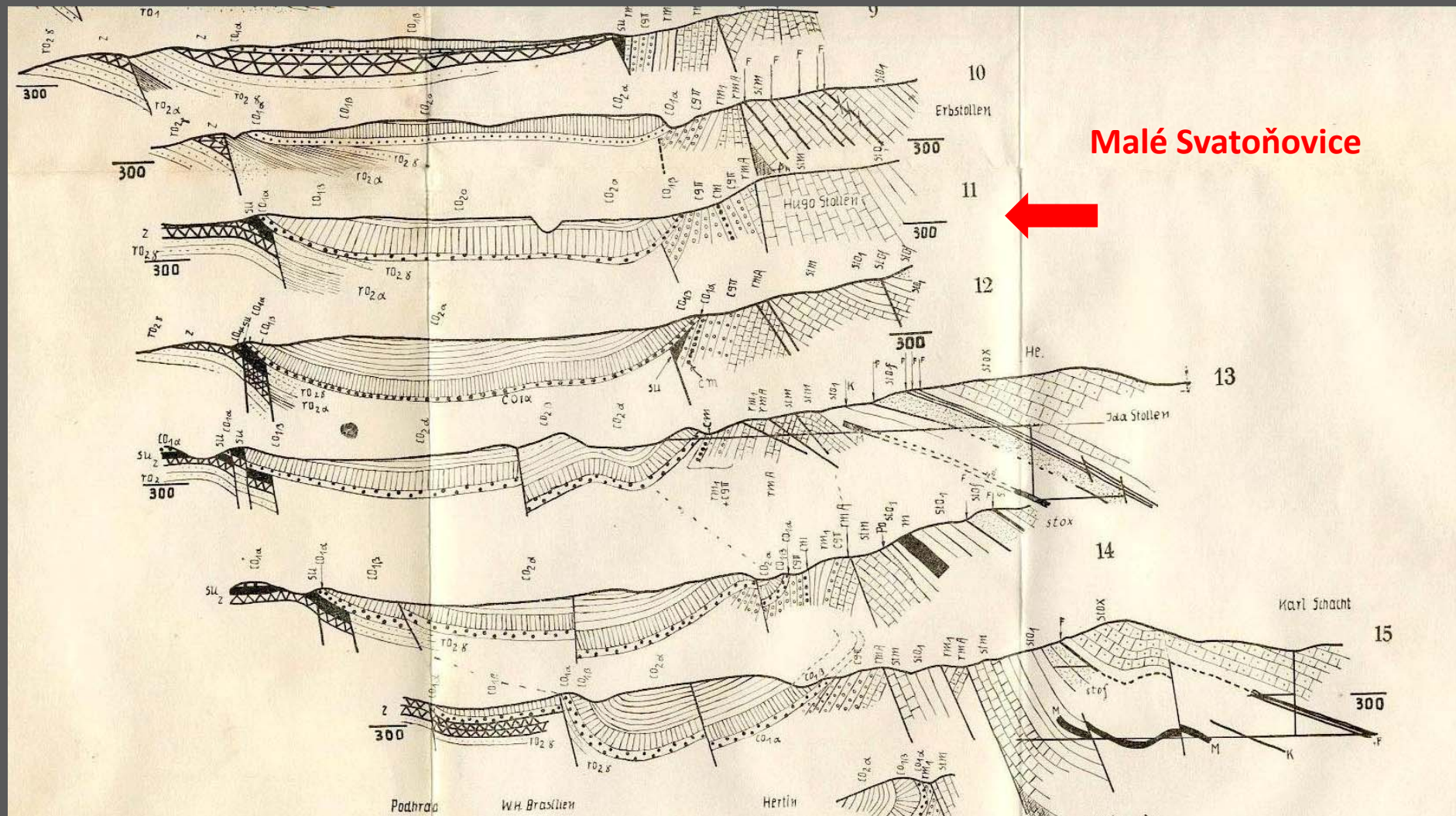
Jurand Wojewoda  
 Wrocław University,  
 Department of Structural Geology  
 and Geological Mapping  
 jurand.wojewoda@ing.uni.wroc.pl



### 1933 (Petrascheck)

Petrascheck, W., 1934. Der böhmische Anteil der Mittelsudeten und sein Vorland. Mitt. Geol. Gesel., Wien. XXVI Bd., 1933, pp. 2-136.

Jurand Wojewoda  
Wrocław University,  
Department of Structural Geology  
and Geological Mapping  
jurand.wojewoda@ing.uni.wroc.pl

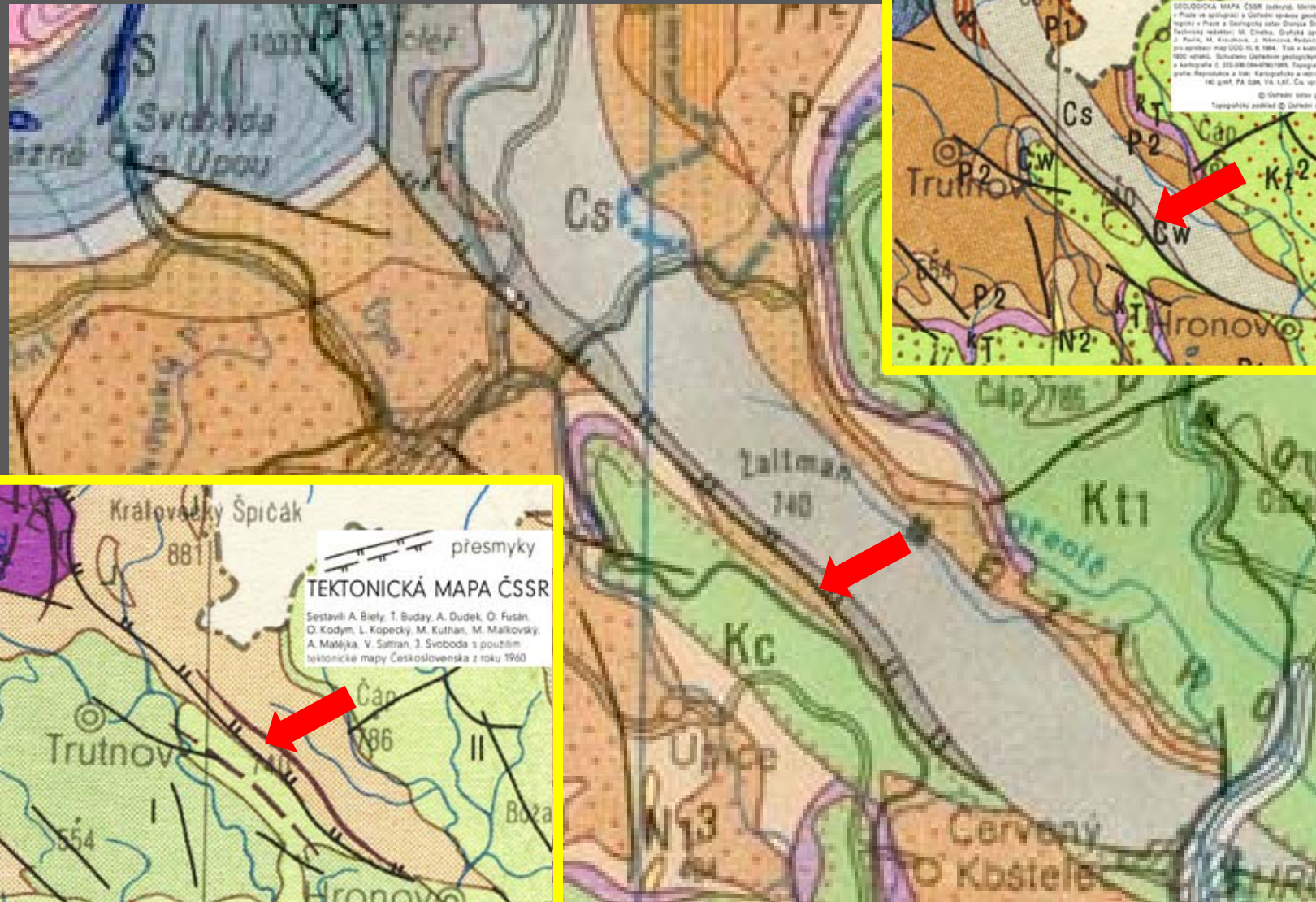


Malé Svatoňovice

1933 (Petrascheck)

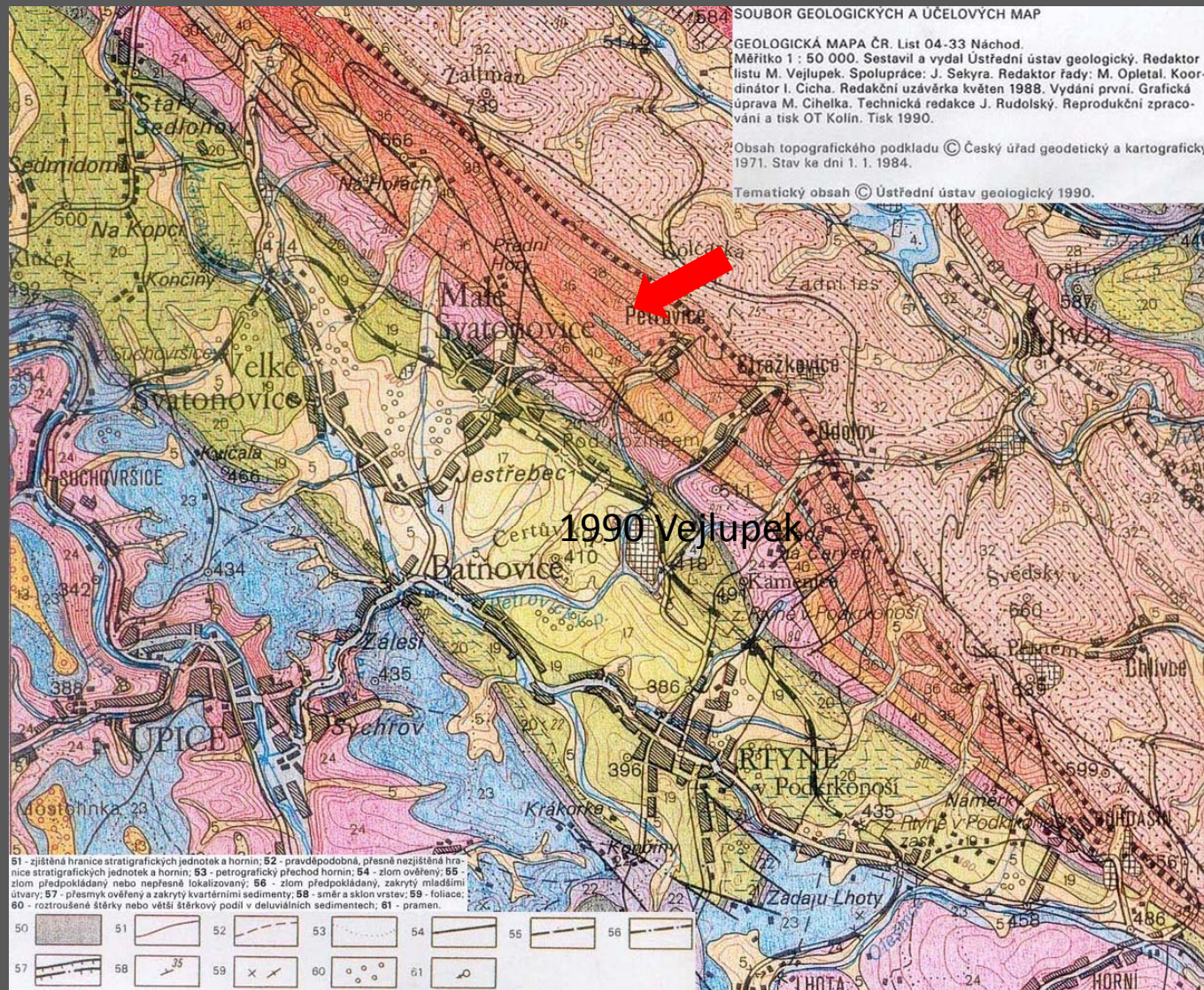
Petrascheck, W., 1934. Der böhmische Anteil der Mittelsudeten und sein Vorland. Mitt. Geol. Gesel., Wien. XXVI Bd., 1933, pp. 2-136.

Jurand Wojewoda  
Wrocław University,  
Department of Structural Geology  
and Geological Mapping  
jurand.wojewoda@ing.uni.wroc.pl



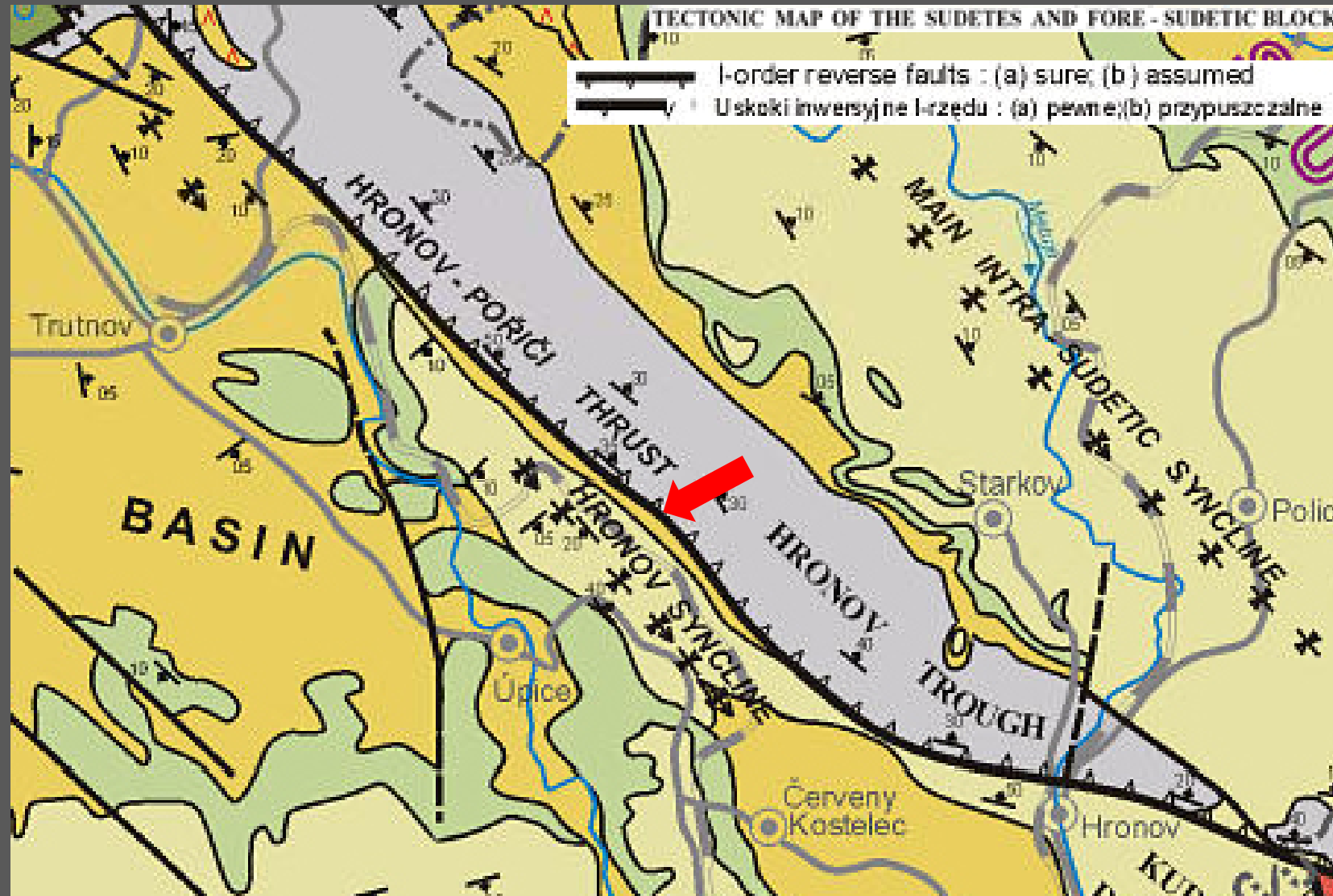
1960, 1963 (Biely et al.), 1966 (Biely)

Jurand Wojewoda  
Wrocław University,  
Department of Structural Geology  
and Geological Mapping  
jurand.wojewoda@ing.uni.wroc.pl

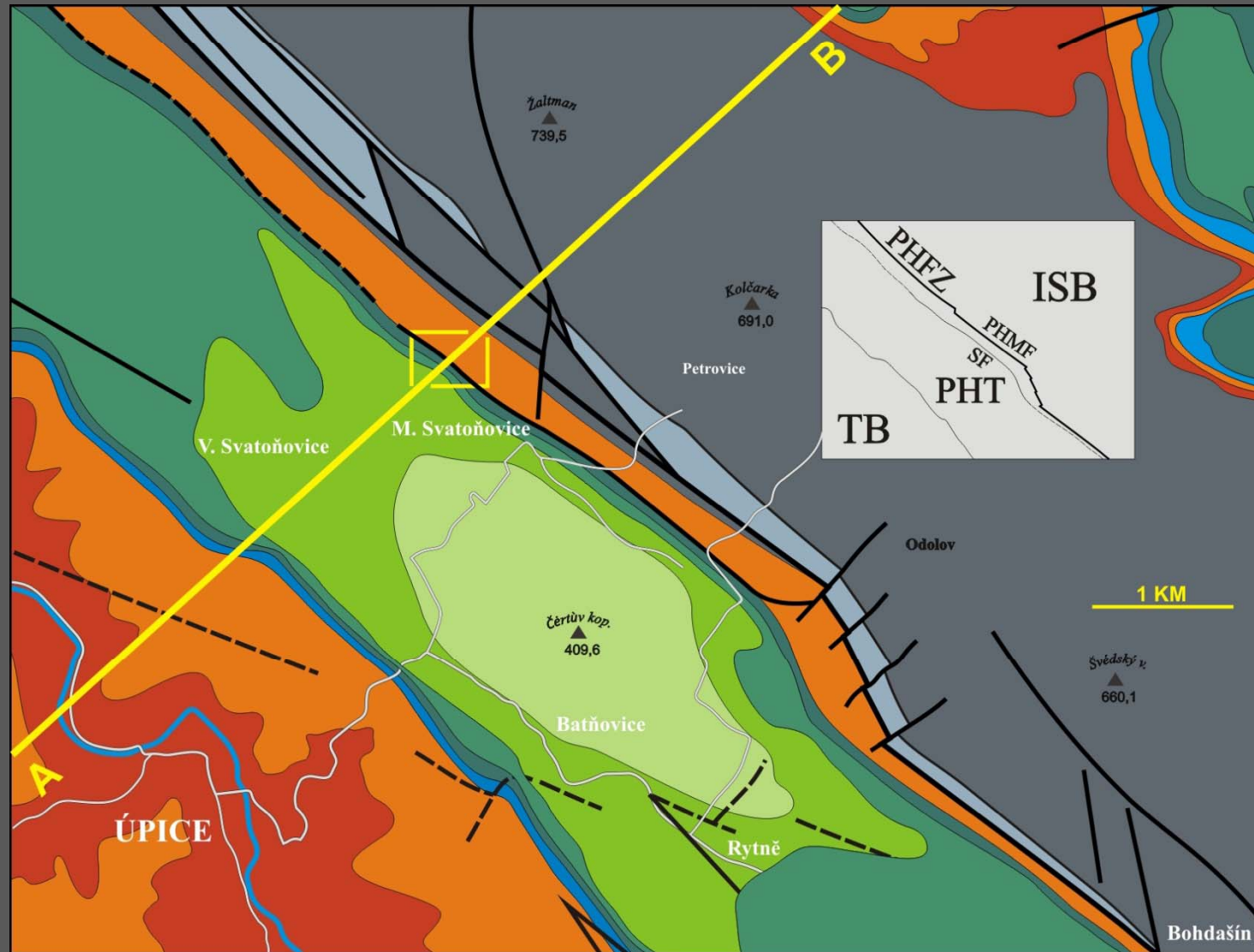


1990 (Vejlupek)

Jurand Wojewoda  
 Wrocław University,  
 Department of Structural Geology  
 and Geological Mapping  
 jurand.wojewoda@ing.uni.wroc.pl



2004 (Cymerman)

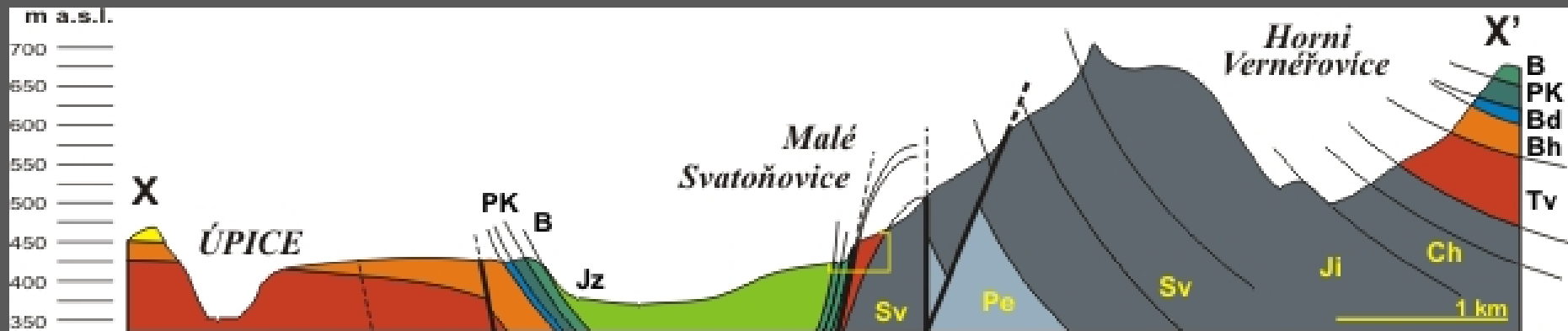
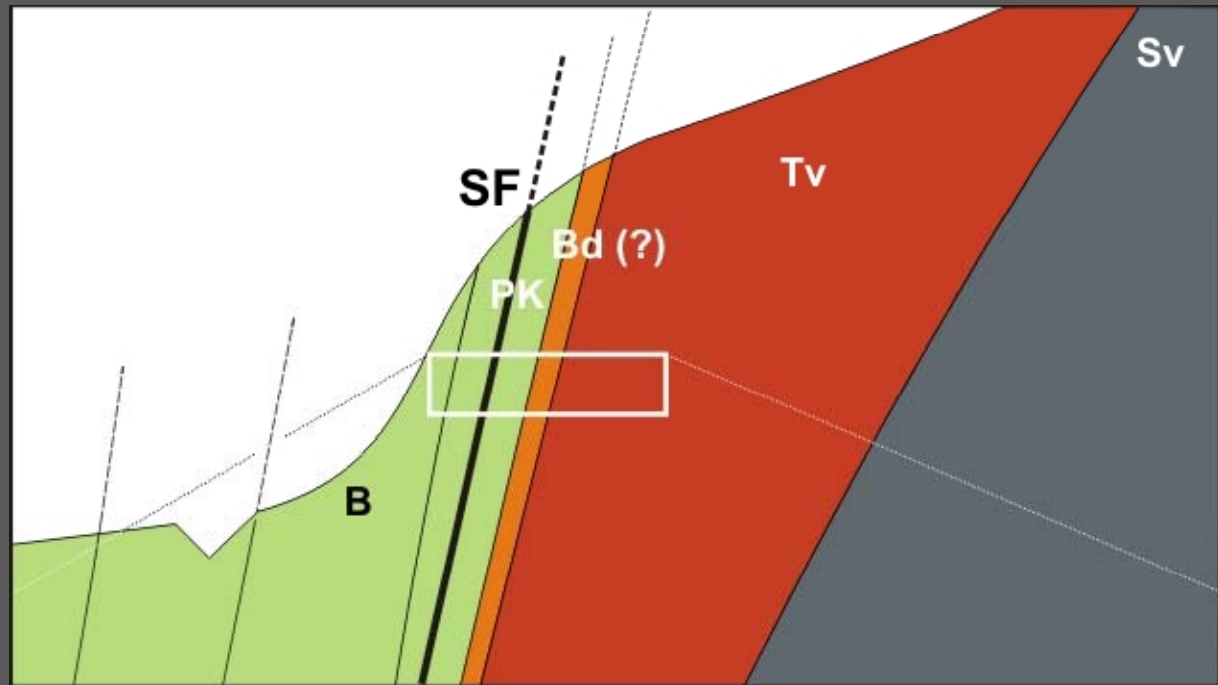


2009 (Wojewoda)

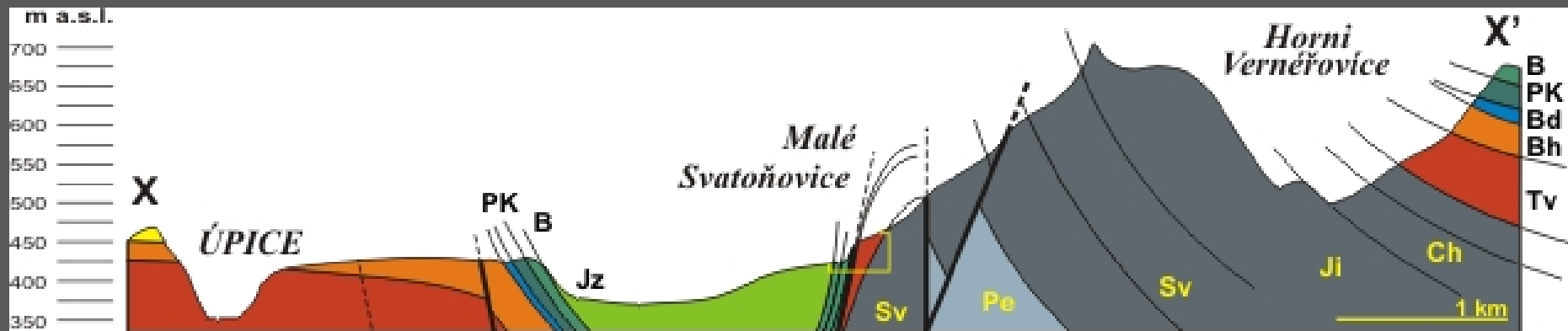
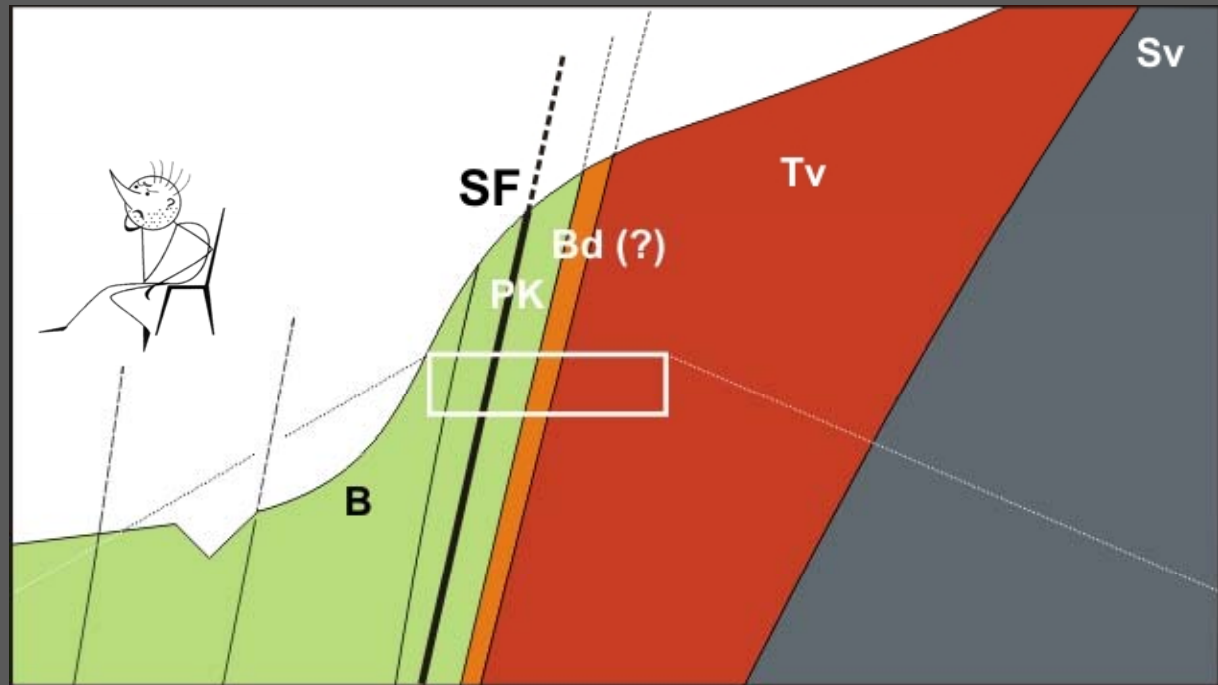
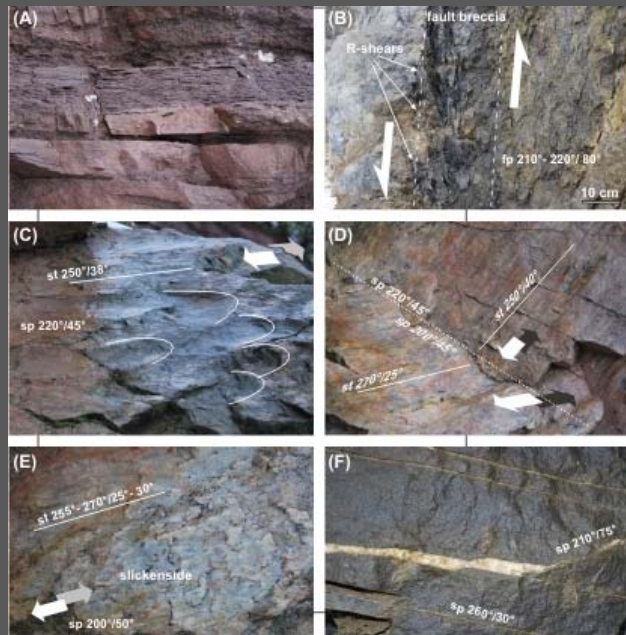
Jurand Wojewoda  
Wrocław University,  
Department of Structural Geology  
and Geological Mapping  
jurand.wojewoda@ing.uni.wroc.pl



- SF – Svatoňovice fault
- Sv – Svatoňovice Fm.
- Tv – Trutnov Fm.
- Bd – Bohdašín Fm.
- PK - Peruc-Korycany Fm.
- B – Bílá hora Fm.



2009 (Wojewoda)

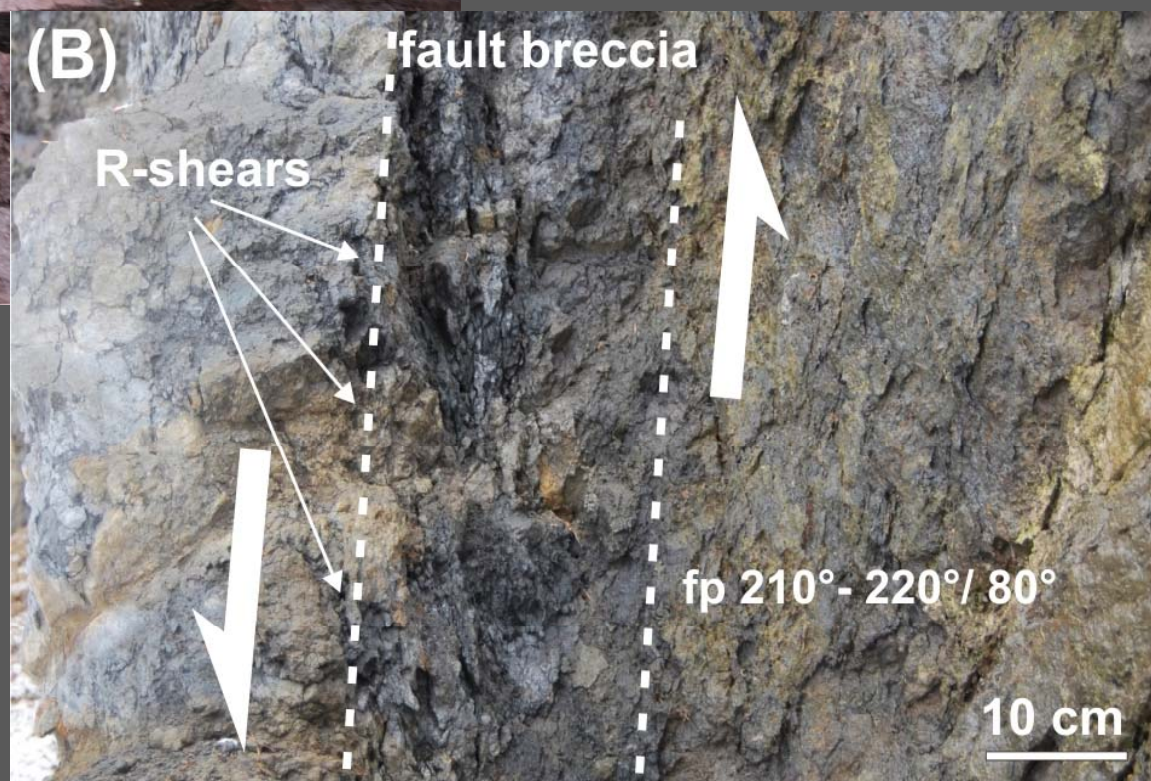
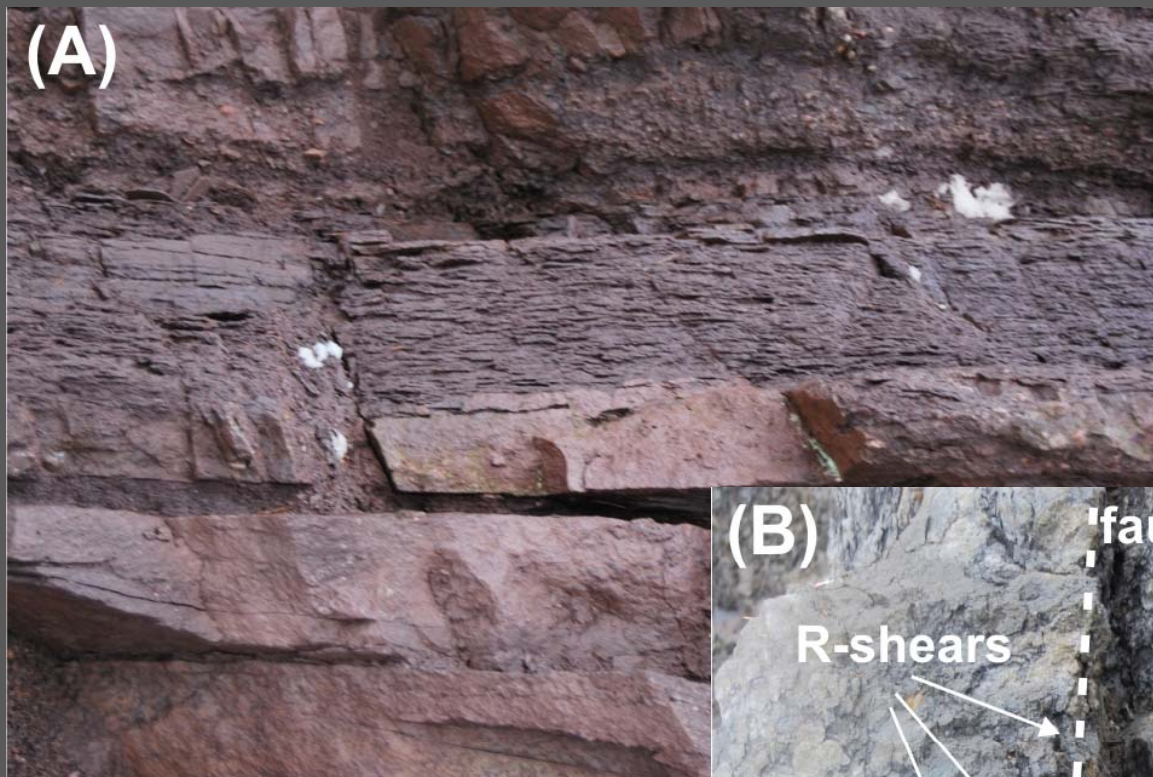


2009 (Wojewoda)

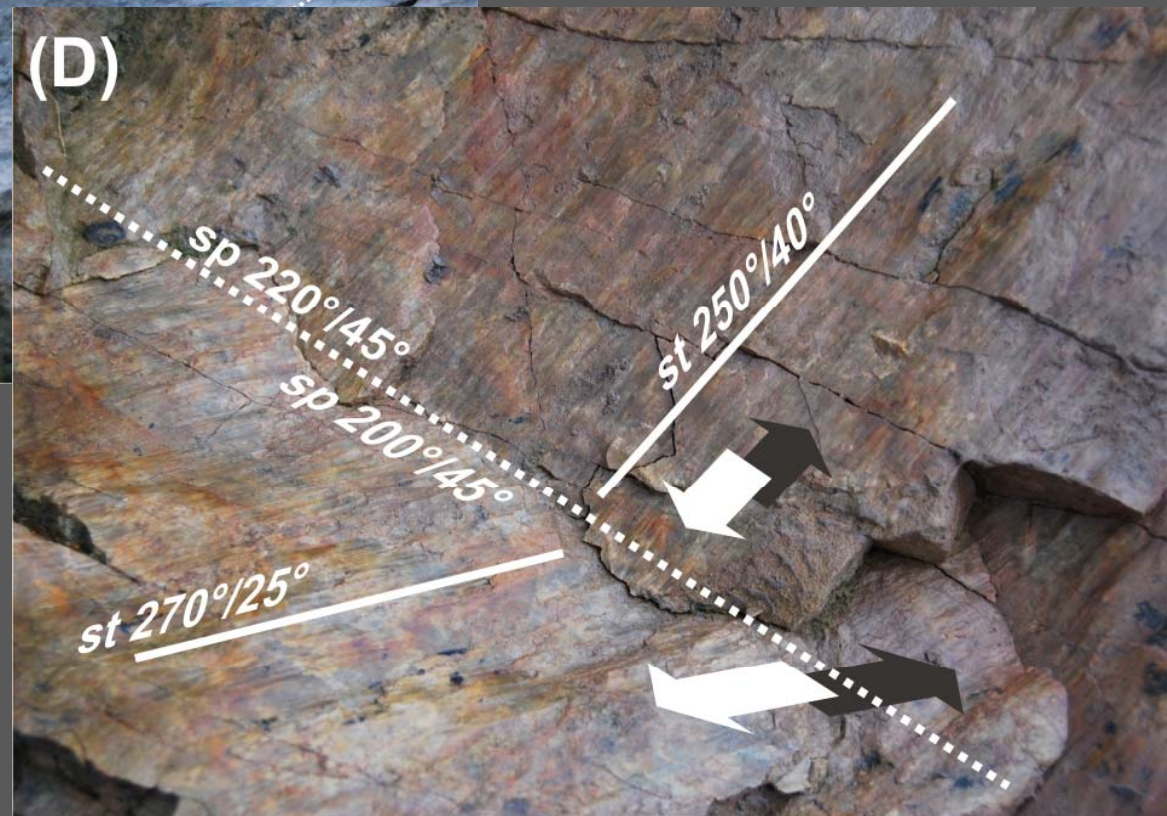
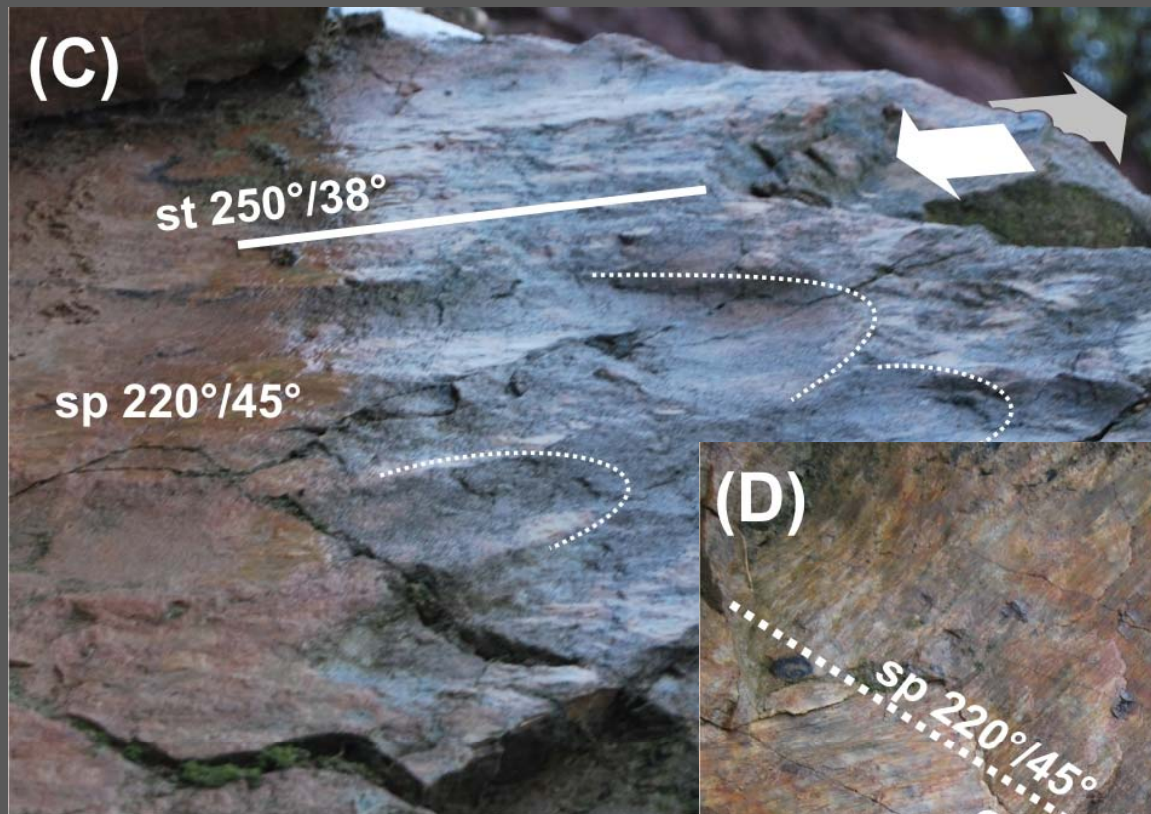
Jurand Wojewoda  
 Wrocław University,  
 Department of Structural Geology  
 and Geological Mapping  
 jurand.wojewoda@ing.uni.wroc.pl



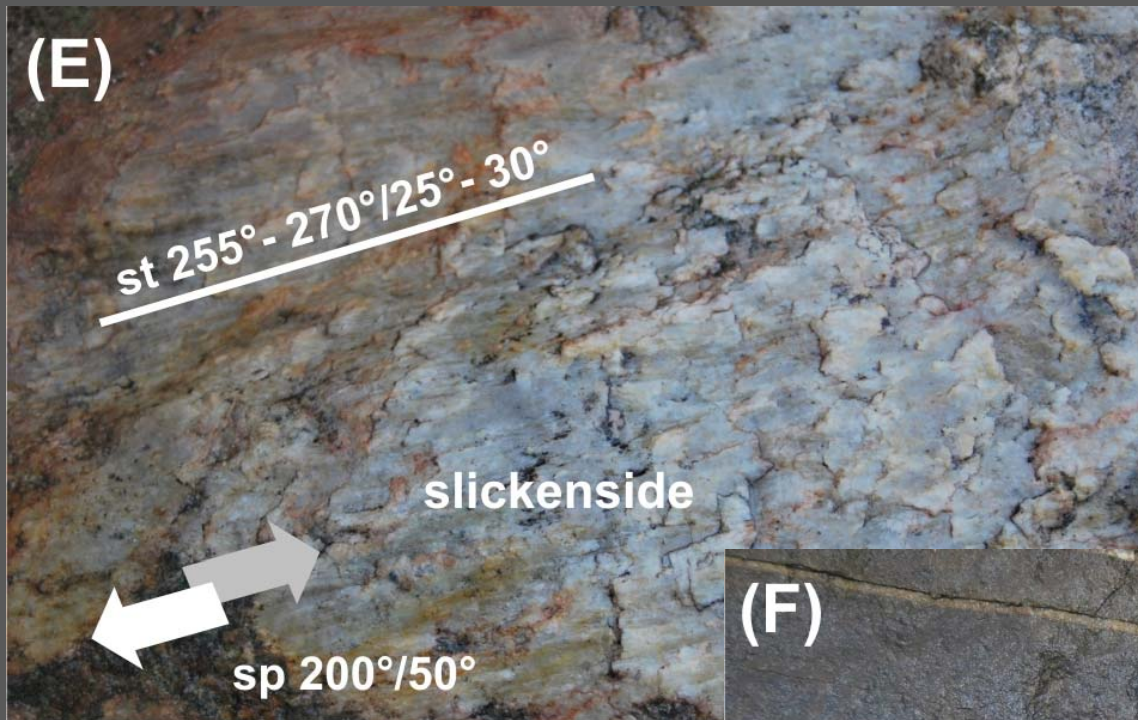
2009 (Wojewoda)



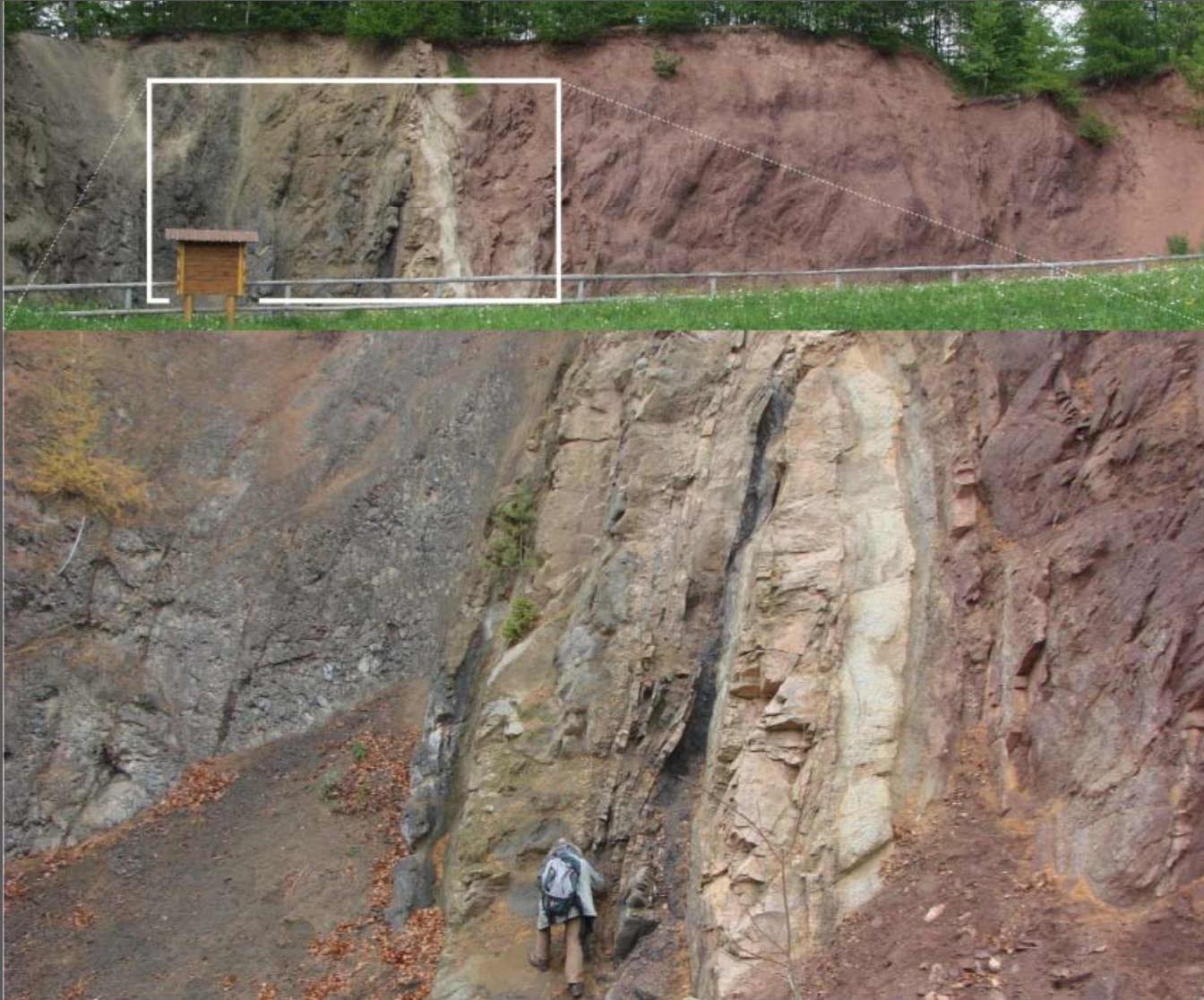
2009 (Wojewoda)



2009 (Wojewoda)

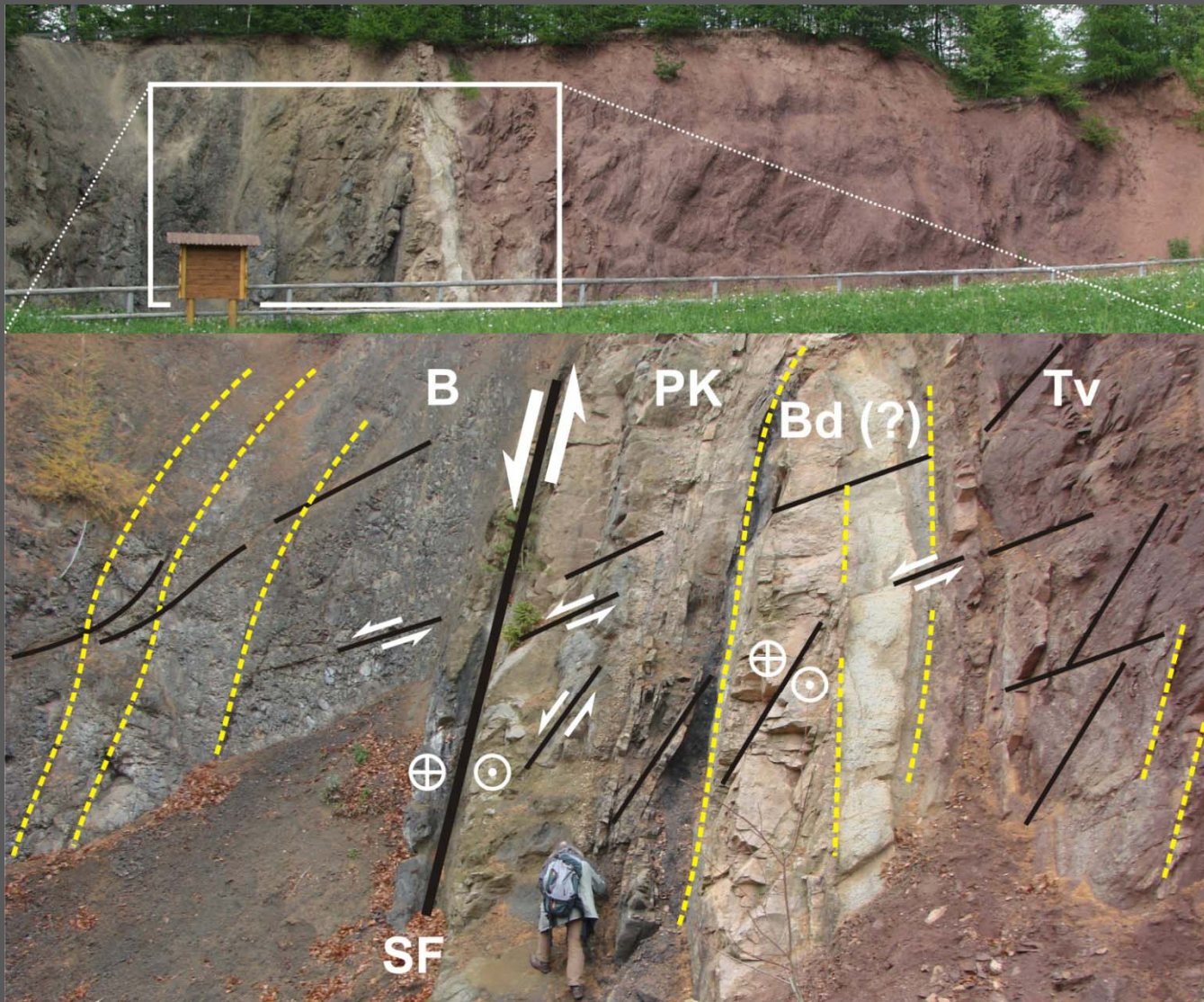


2009 (Wojewoda)



2009 (Wojewoda)

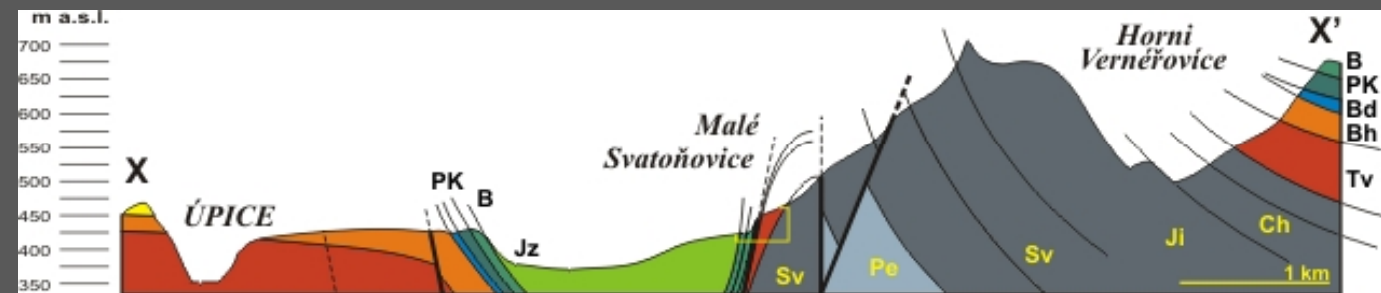
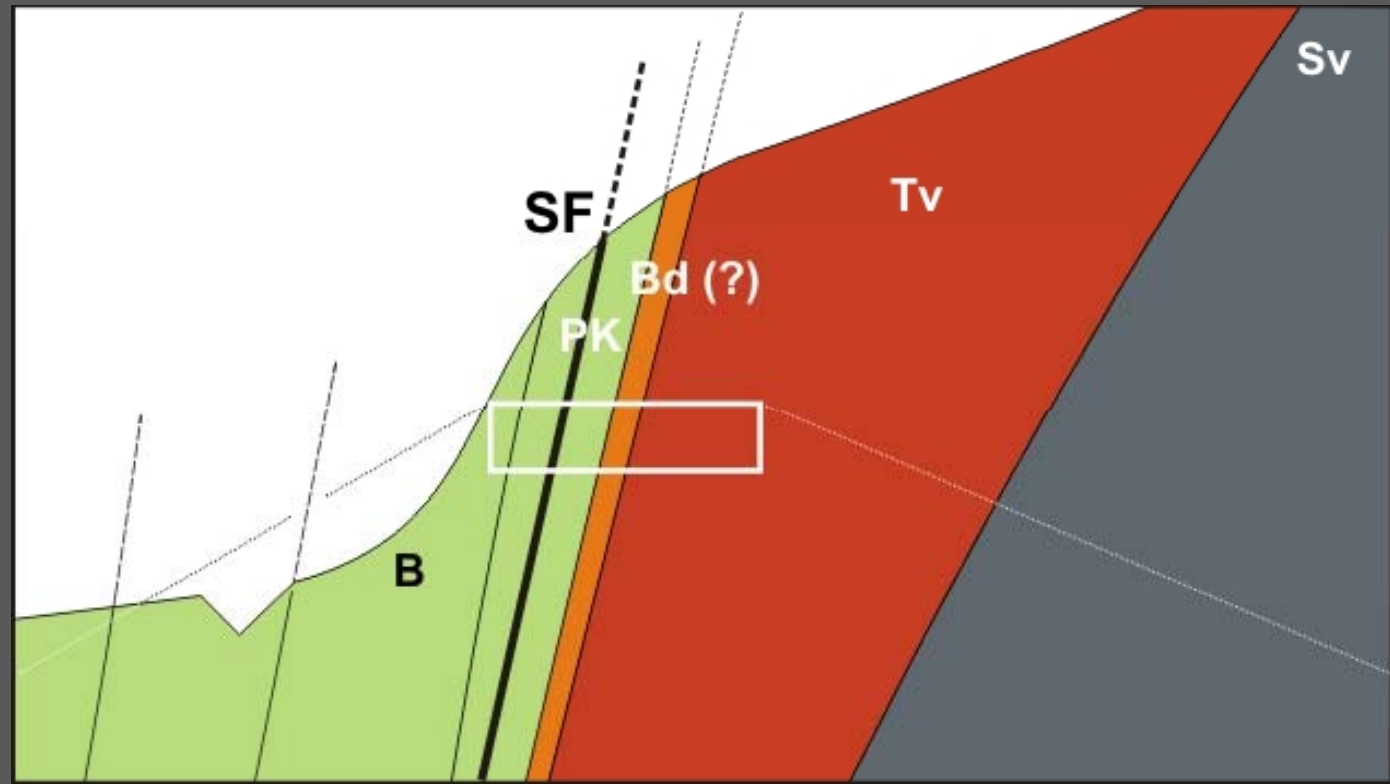
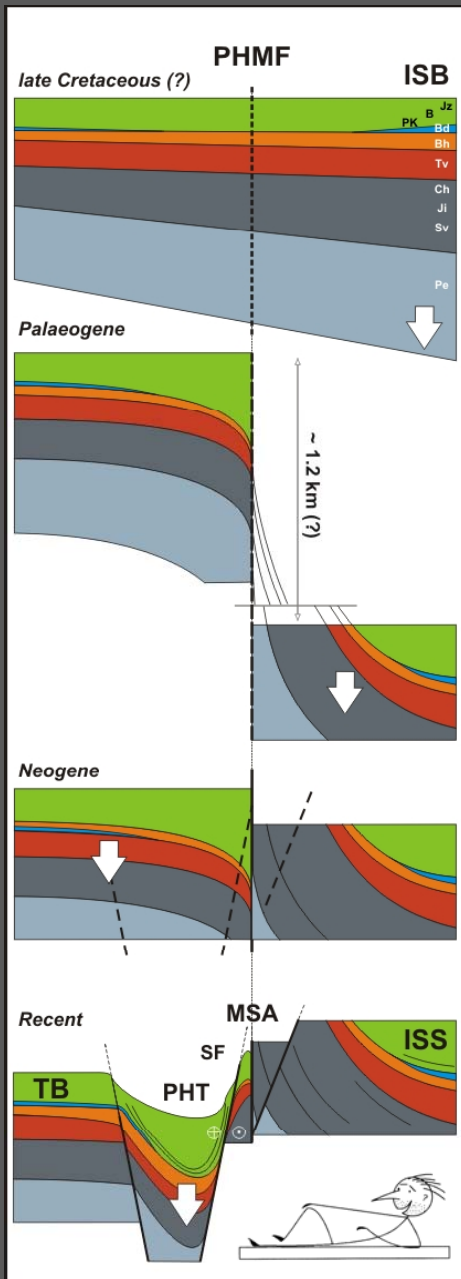
Jurand Wojewoda  
Wrocław University,  
Department of Structural Geology  
and Geological Mapping  
jurand.wojewoda@ing.uni.wroc.pl



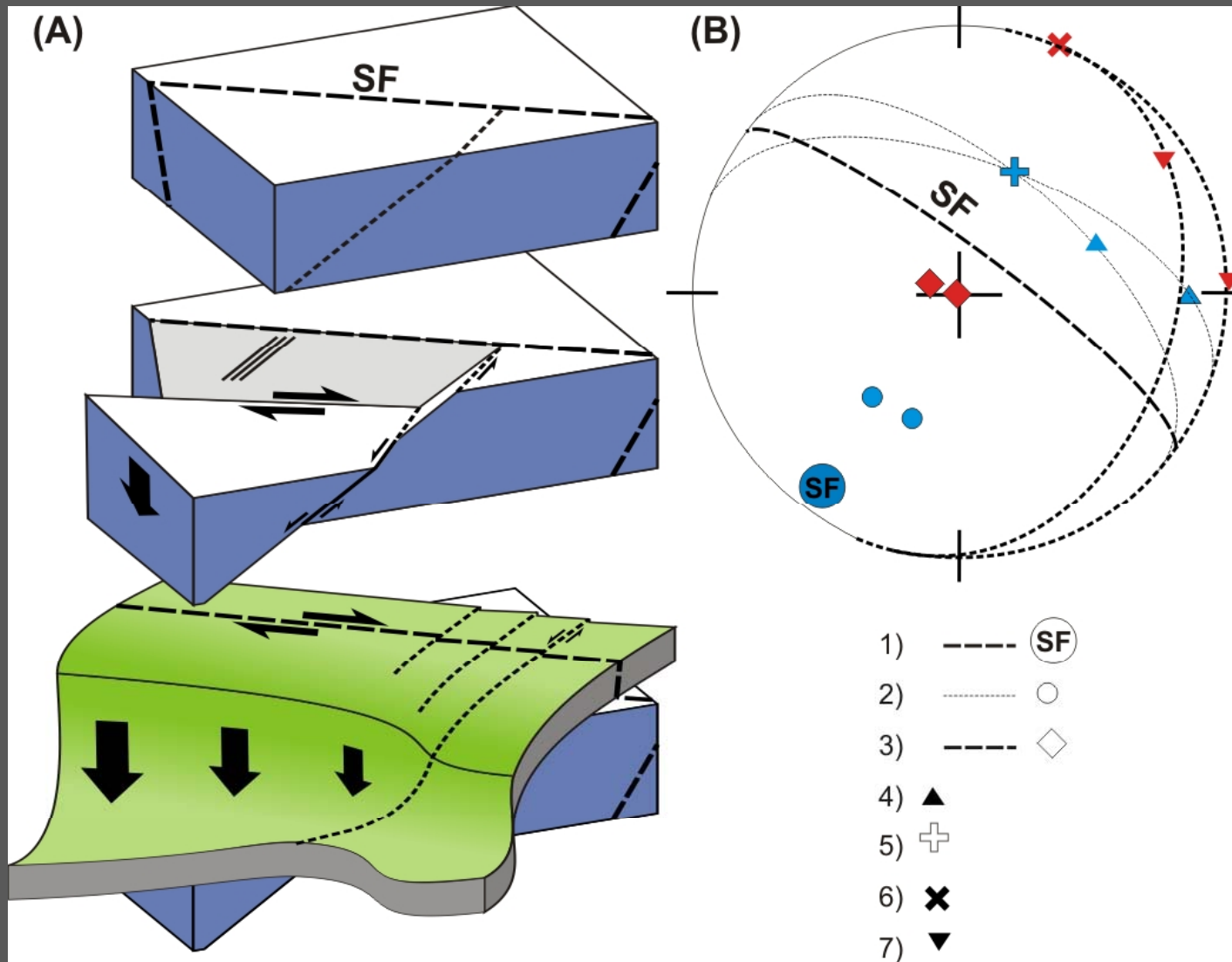
2009 (Wojewoda)

Jurand Wojewoda  
Wrocław University,  
Department of Structural Geology  
and Geological Mapping  
jurand.wojewoda@ing.uni.wroc.pl

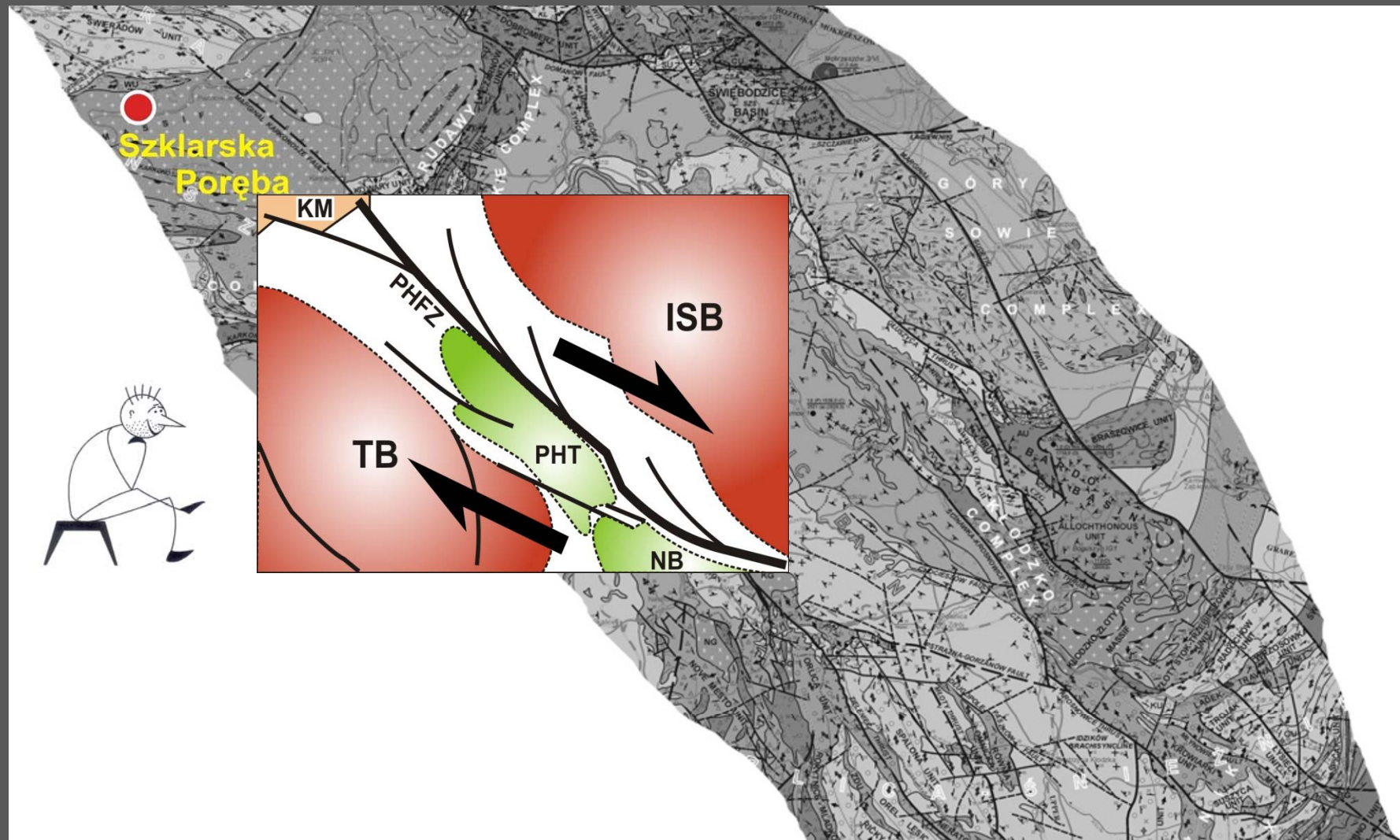




2009 (Wojewoda)

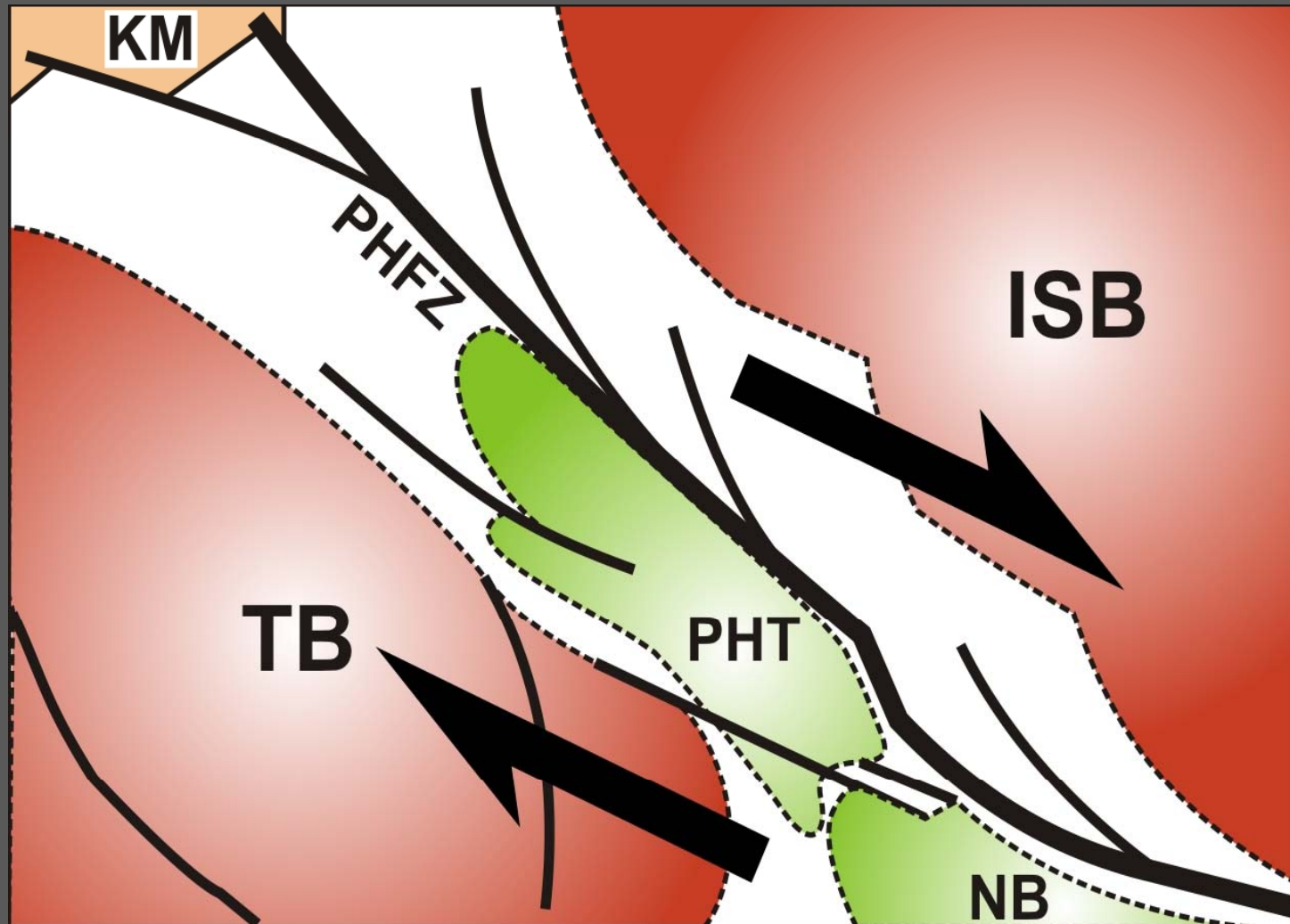


2009 (Wojewoda)



2009 (Wojewoda)

Jurand Wojewoda  
Wrocław University,  
Department of Structural Geology  
and Geological Mapping  
jurand.wojewoda@ing.uni.wroc.pl



**KM** – Karkonosze Massiff  
**ISB** – Intrasedetic Synclinorium  
**TB** – Trutnov Basin  
**PHT** – Hronov Trough  
**NB** – Nachod Basin  
**PHFZ** – Pořící-Hronov Fault Zone

2009 (Wojewoda)

Jurand Wojewoda  
Wrocław University,  
Department of Structural Geology  
and Geological Mapping  
jurand.wojewoda@ing.uni.wroc.pl



**Caravanning 2009...**

**Dziękuję za uwagę. Wykład w wersji pdf  
dostępny na stronie:**

**[www.ing.uni.wroc.pl/~jurand.wojewoda](http://www.ing.uni.wroc.pl/~jurand.wojewoda)**