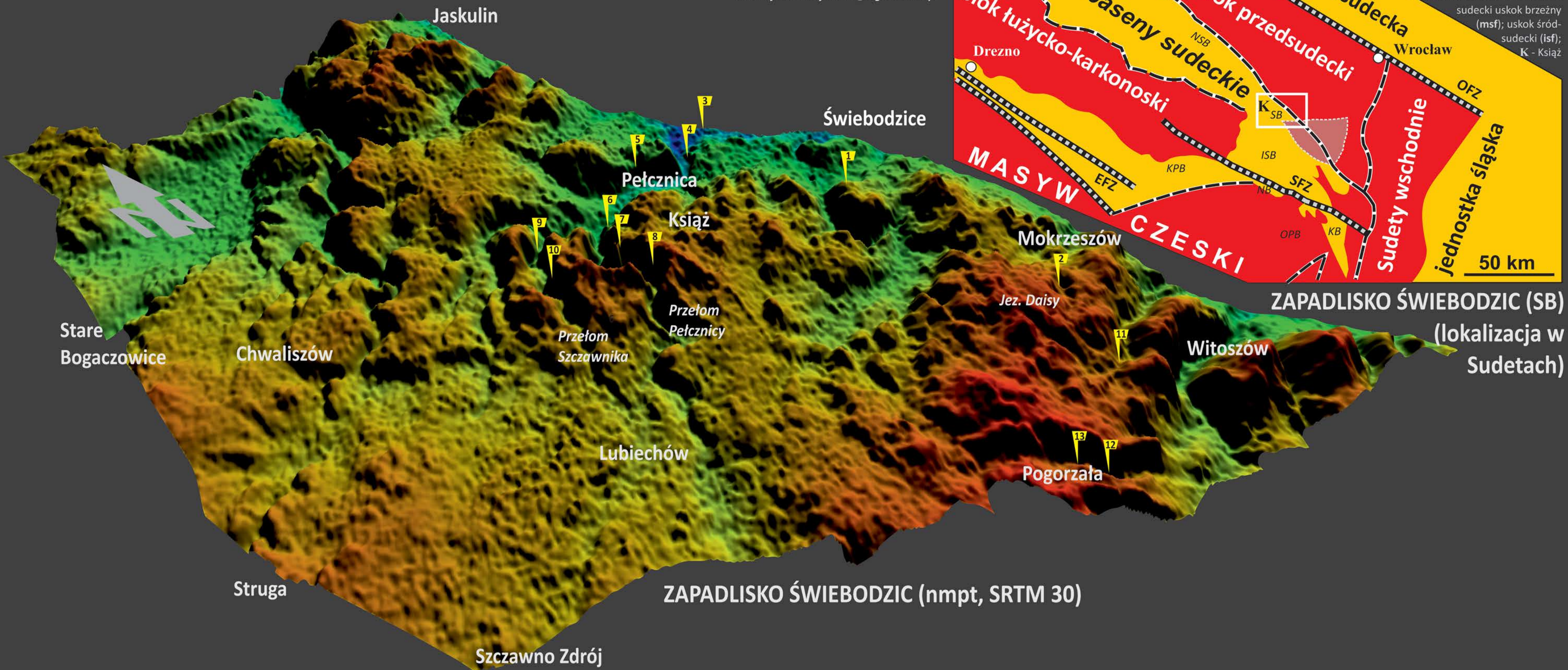
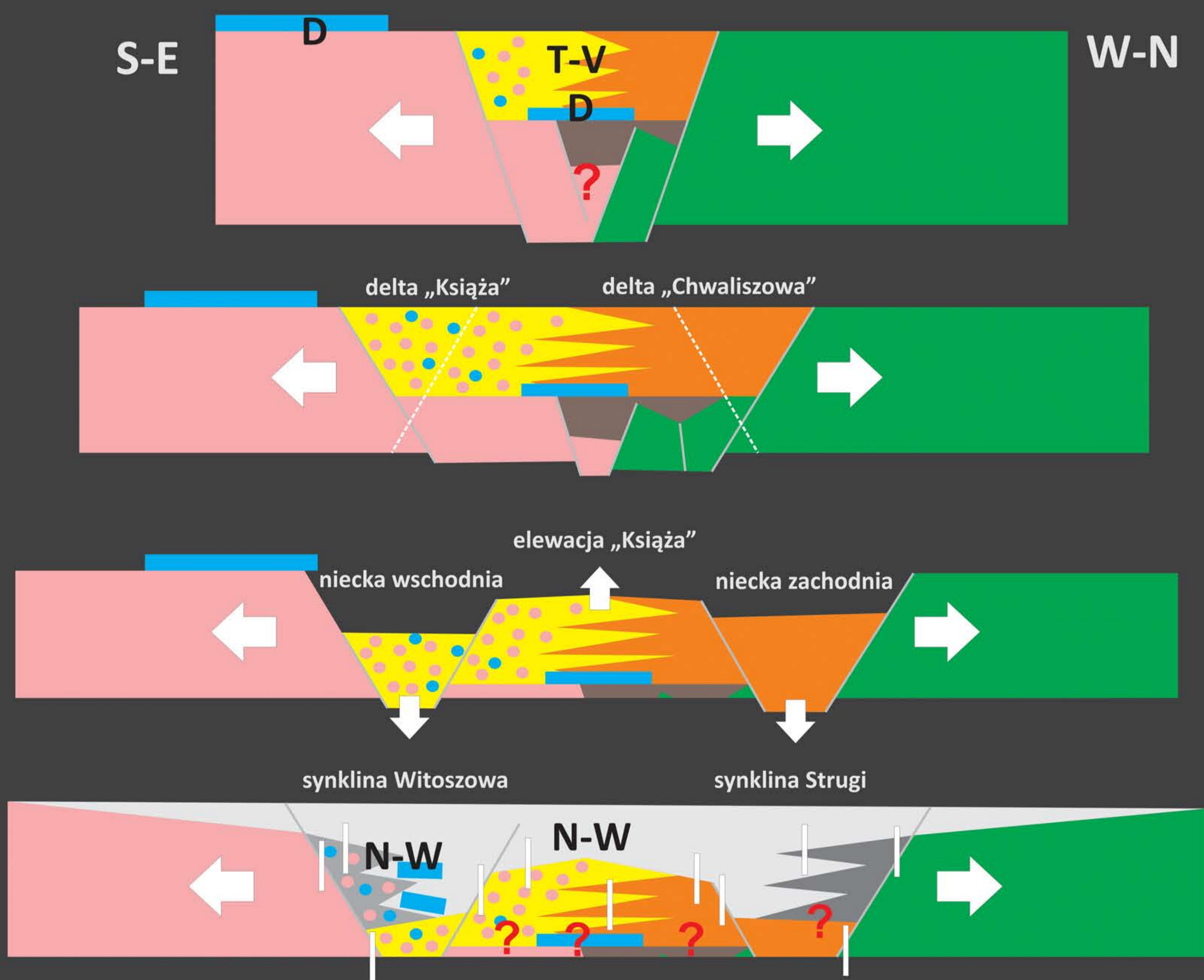


# ZAPADLIKO ŚWIEBODZIC (MODEL STRUKTURY BASENU)

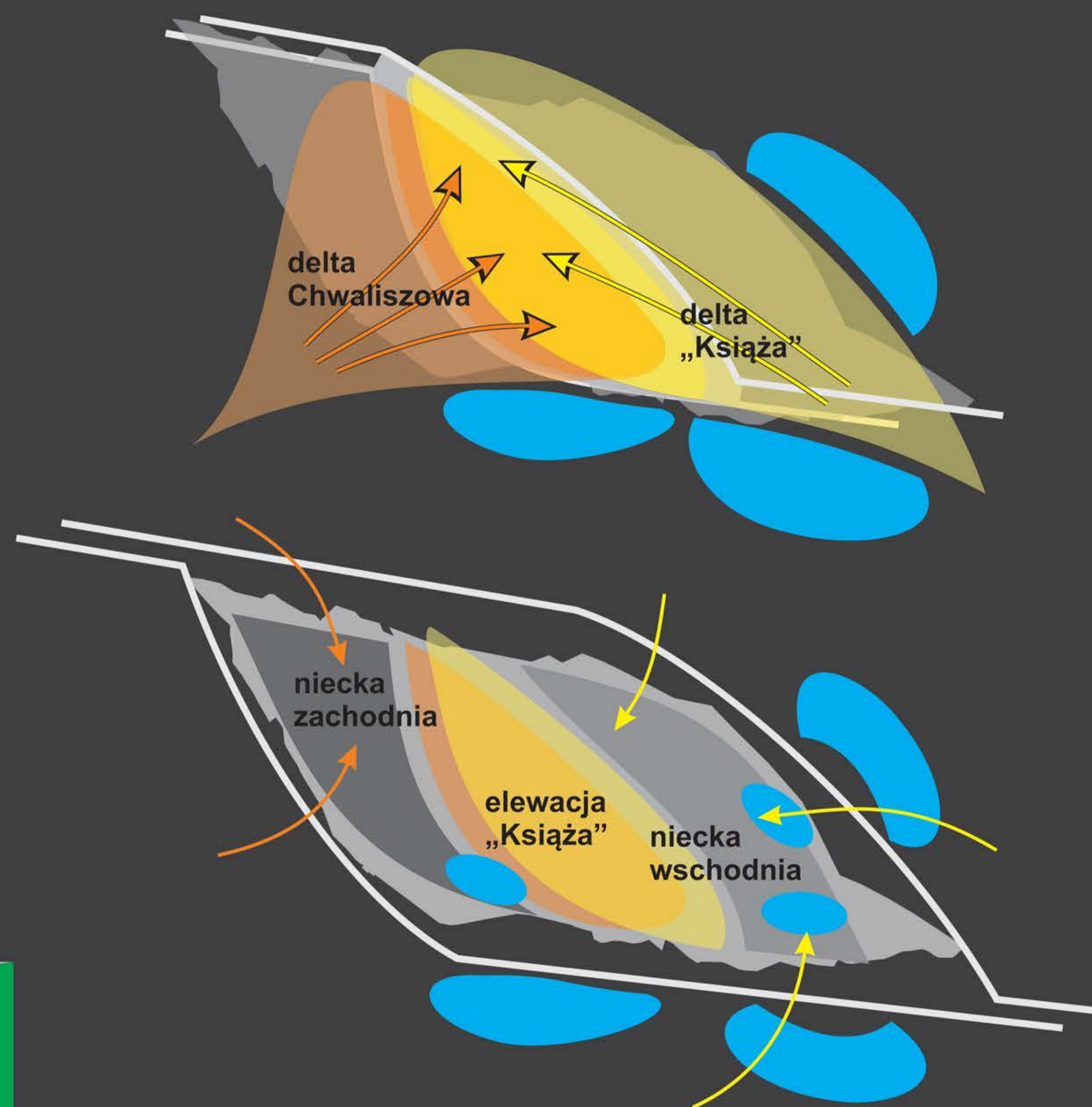
Jurand Wojewoda  
Instytut Nauk Geologicznych  
Uniwersytet Wrocławski  
e-mail: jurand.wojewoda@ing.uni.wroc.pl



## STRATYGRAFIA



## MODELE



## EWOLUCJA STRUKTURALNA BASENU ŚWIEBODZIC

